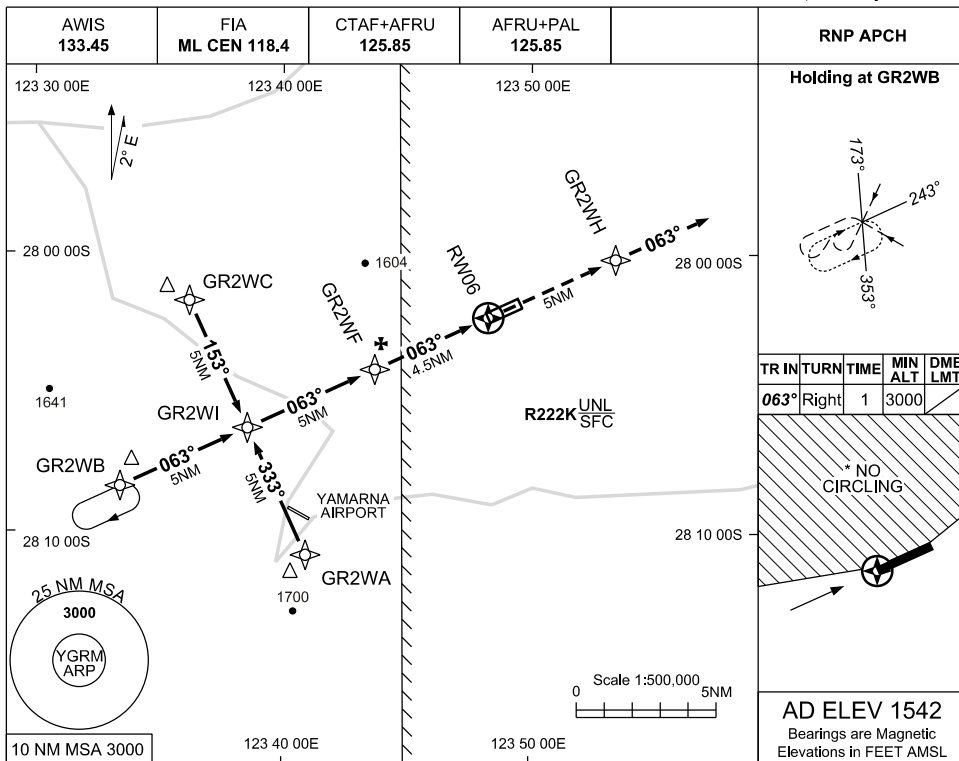


USE QNH

RNP RWY 06

9 JUL 2026

GRUYERE, WA (YGRM)

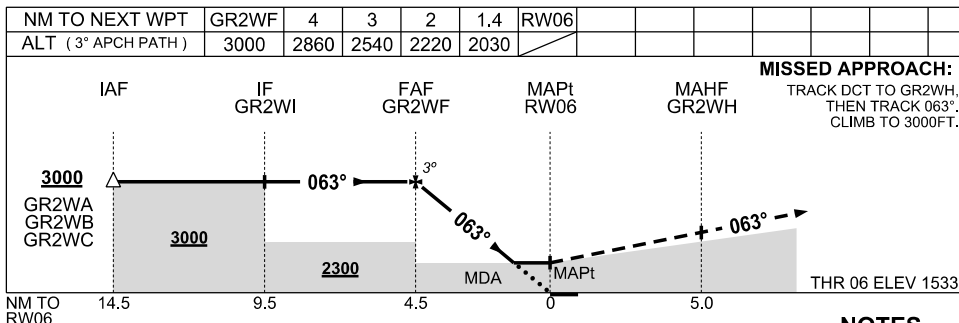


**Holding at GR2WB**

TR	IN	TURN	TIME	MIN ALT	DME LMT
063°	Right		1	3000	

**\* NO CIRCLING**

**AD ELEV 1542**  
Bearings are Magnetic  
Elevations in FEET AMSL



CATEGORY	A	B	C	D
LNAV	2030 (497-2.8)			NOT AUTHORISED
CIRCLING *	2140 (598-2.4)		2240 (698-4.0)	
ALTERNATE	(1098-4.4)		(1198-6.0)	

- \*1. NO CIRCLING NORTH OF RWY06/24.
- 2. PROCEDURE OVERLIES YAMARNA AD.
- 3. PROC NOT AVBL WHEN R222K IS ACTIVE VIA NOTAM.

Changes: R222K, NOTES ADDED

GRMGN01-187