

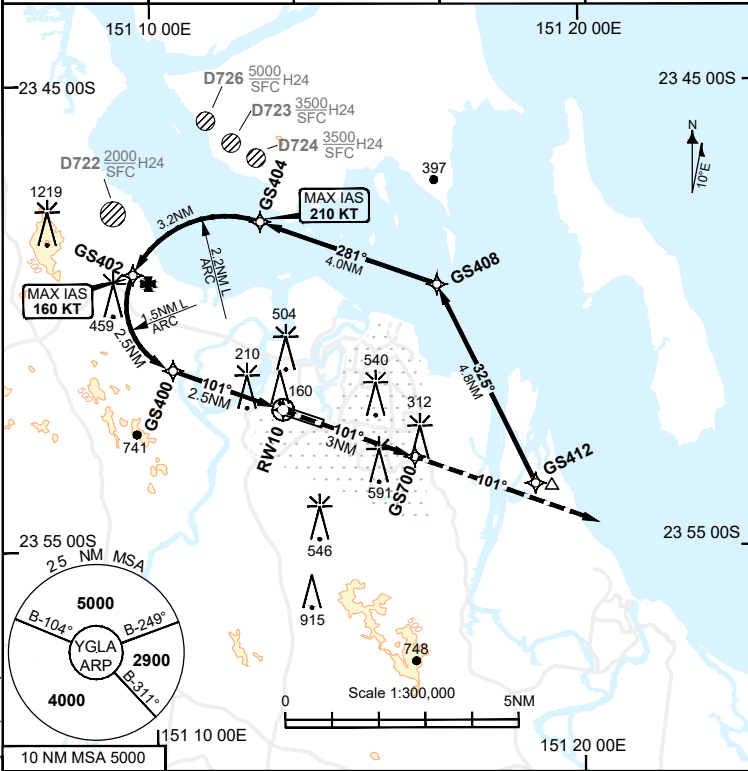
**FOR CASA APPROVED
OPERATORS ONLY
USE QNH**

RNP X RWY 10 (AR)
GLADSTONE, QLD (YGLA)

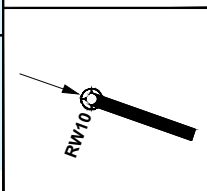
04 SEP 2025

AWIS 126.85	FIA BN CEN 119.55	CTAF+AFRU 118.8	AFRU+PAL 118.8	RNV X 10 THR ELEV 58
----------------	----------------------	--------------------	-------------------	-------------------------

- RNP AR APCH
- RF RQ
- YGLA ACT QNH RQ
- YGLA ACT TEMP RQ
- PROC TEMP RANGE
+3°C TO +72°C

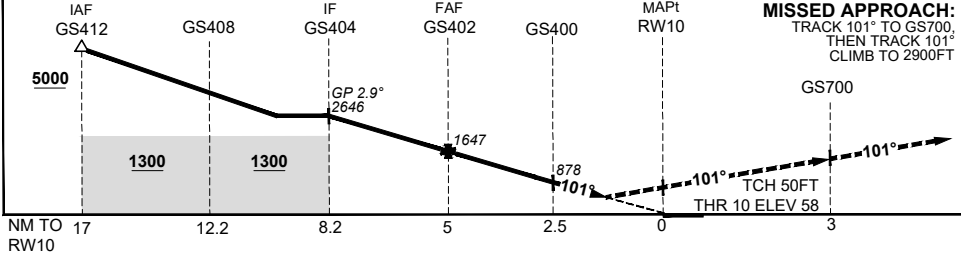


TR	INTURN	TIME	MIN ALT	DME



AD ELEV 59
Bearings are Magnetic
Elevations in FEET AMSL

NM TO NEXT WPT	GS408	GS404	GS402	GS400	1.5			
ALT (2.9° APCH PATH)	3900	2646	1647	878	570			



CATEGORY	A B		C	D
	RNP (0.30)		DA(H) 570 (512 - 3.0)	DA(H) 570 (512 - 3.0)
CIRCLING	N/A	NOT AUTHORISED	NOT AUTHORISED	
ALTERNATE				

NOTES
1. RNP 0.3 Required from GS412 TO RWY10.

Changes: FROM AIP SUP H75/25 GLAGN03-184

DO NOT USE FOR NAVIGATION

Prepared by GE Aerospace - ICAO Doc 9905 Compliant

© Airservices Australia

