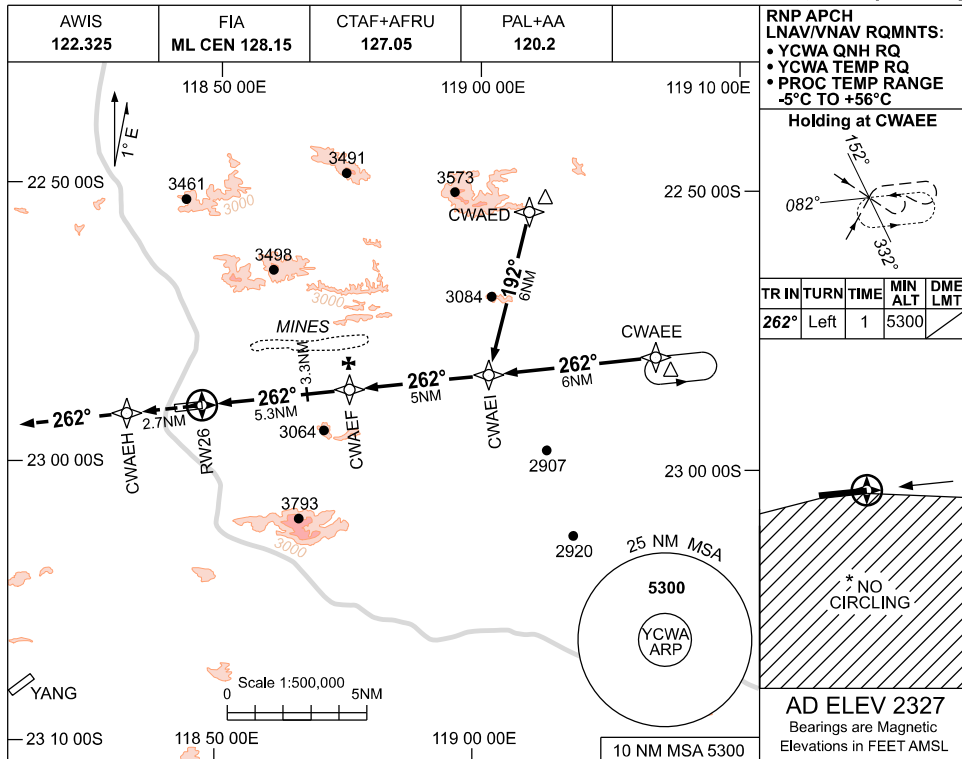


USE QNH

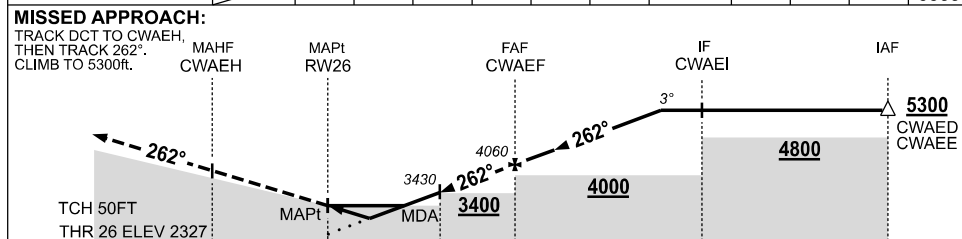
RNP RWY 26

04 SEP 2025

COONDEWANNA, WA (YCWA)



NM TO NEXT WPT	RW26	1.5	2.5	3	3.3	4	5	CWAEF	1	2	3	4
ALT (3° APCH PATH)		2840	3170	3330	3430	3650	3970	4060	4370	4690	5010	5300



NOTES

1. MAX IAS:
INITIAL : 230KT.
- * 2. NO CIRCLING S OF RWY 08 / 26.
3. BLASTING OPS (SEE ERSA)
4. APCH PATH ANGLE DOES NOT COINCIDE WITH PAPI ON GLIDE SLOPE INDICATION.
5. COLOUR: SEE SPEC NOTICES.

CATEGORY	A	B	C	D
LNAV/VNAV	2840 (513-2.9)			
LNAV	3170 (843-4.8)			
CIRCLING *	3340 (1013-2.4)	3850 (1523-4.0)	4160 (1833-5.0)	
ALTERNATE	(1513-4.4)	(2023-6.0)	(2333-7.0)	

Changes: CAT C CIRCLING MINIMA, CAT C ALTERNATE MINIMA, Editorial.

CWAGN02-184