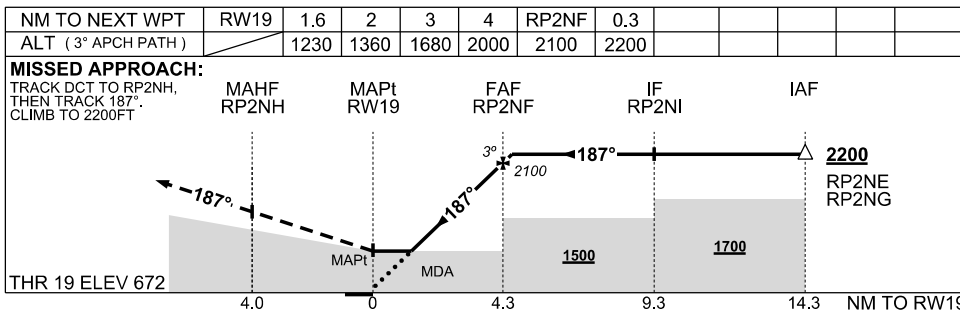
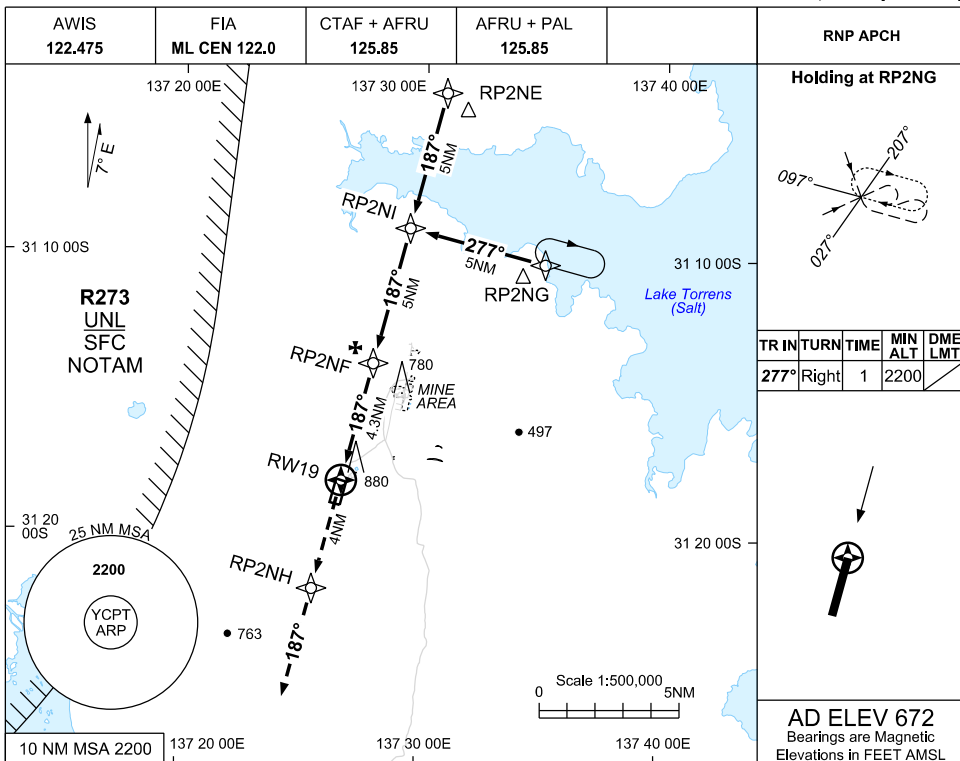


USE QNH

RNP RWY 19

09 JUL 2026

CARRAPATEENA, SA (YCPT)



NOTES

CATEGORY	A	B	C	D
LNAV	1230 (558-3.2)			NOT APPLICABLE
CIRCLING	1290 (618-2.4)		1420 (748-4.0)	
ALTERNATE	(1118-4.4)		(1248-6.0)	

Changes: AWIS, ADDED/MODIFIED OBSTACLES

CPTGN02-187