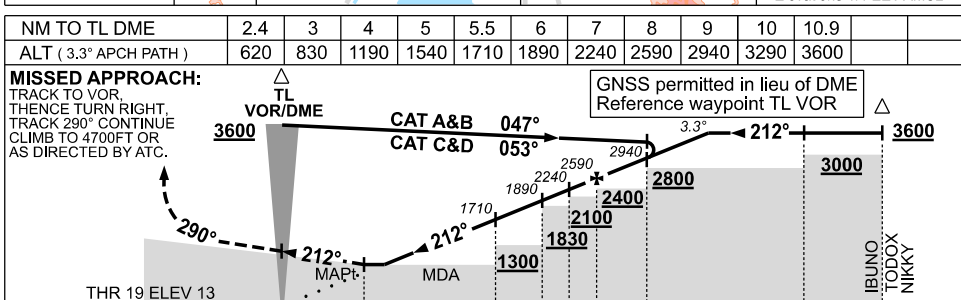
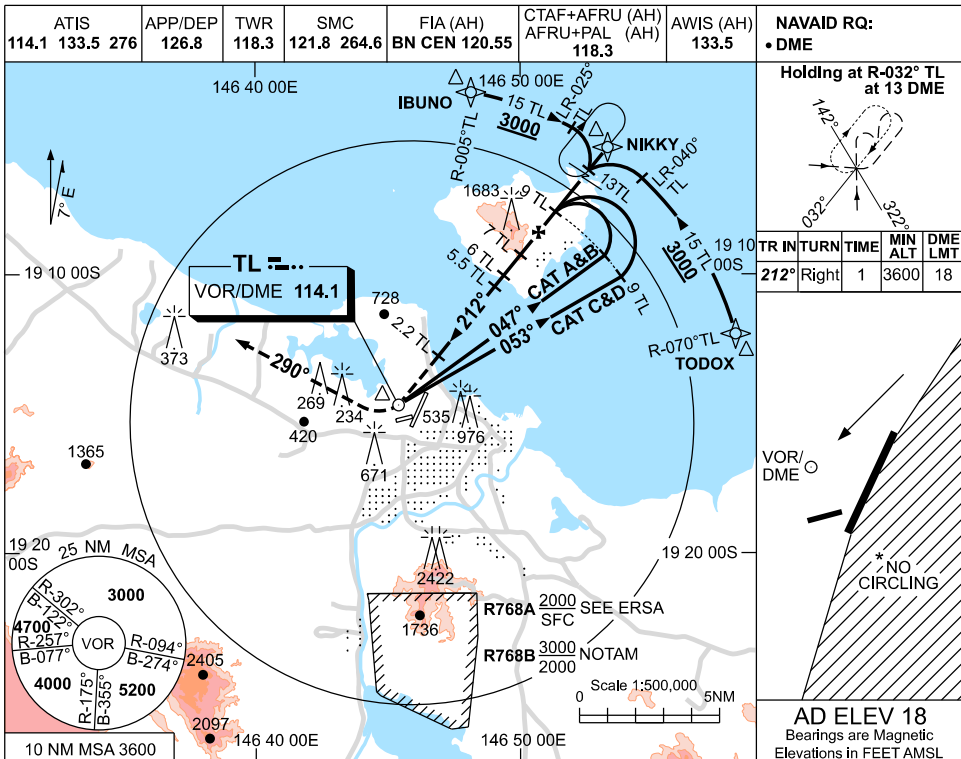


USE QNH
TOWNSVILLE/TOWNSVILLE INTL, QLD (YBTL)
09 JUL 2026 **VOR RWY 19**



NOTES

1. MAX IAS:
 INITIAL : 210KT.
 MAP TURN: 240KT.
- *2. NO CIRCLING IN
 SECTOR EAST OF
 RWY 01 & RWY 19.
- *3. SPECIAL ALTN MNM
 900/4.5KM.
4. COLOUR: SEE
 SPEC NOTICES.

CATEGORY	A	B	C	D
S-I VOR/DME	620 (602-3.1)			
CIRCLING *	1090 (1072-2.4)	1350 (1332-4.0)	1380 (1362-5.0)	
ALTERNATE **	(1572-4.4)	(1832-6.0)	(1862-7.0)	

Changes: MINIMA.

BTLV001-187