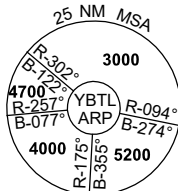
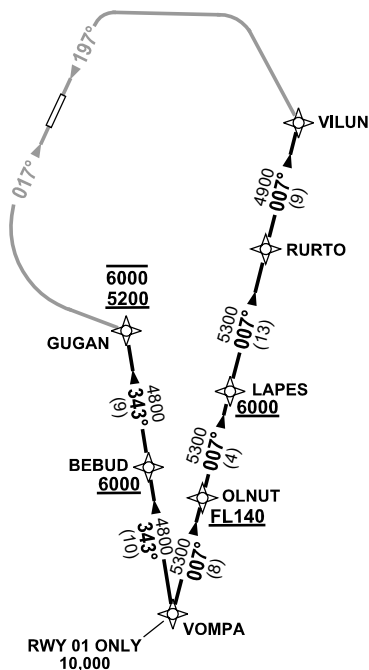


TOWNSVILLE/TOWNSVILLE INTL, QLD (YBTL)

| | | | | | | | | |
|-----------------|-------|-------------|-------|---------|------------------|-------------------|-----------|--|
| ATIS | ACD | SMC | TWR | APP/DEP | FIA (AH) | CTAF+AFRU (AH) | AWIS (AH) | Bearings are Magnetic Elevations in FEET AMSL |
| 114.1 133.5 276 | 128.1 | 121.8 264.6 | 118.3 | 126.8 | BN CEN 120.55 | AFRU+PAL 118.3 | 133.5 | |

A diagram showing a vertical line and a line labeled E at an angle of 7° from the vertical.

RNP 1



VOMPA TWO ARRIVAL

- **Cross** VOMPA AT or ABV 10,000ft
- From VOMPA track 343° to BEBUD
- **Cross** BEBUD AT or ABV 6000ft
- Track 343° to GUGAN
- **Cross** GUGAN BETWEEN 5200-6000ft
- From GUGAN track via RNP P RWY 01 (AR)

- From VOMPA track 007° to OLNUT
Cross OLNUT AT or ABV FL140
- Track 007° to LAPES
Cross LAPES AT or ABV 6000ft
- Track 007° to RURTO
- Track 007° to VILUN
- From VILUN track via RNP P RWY19 (AR)

- Squawk 7600, comply with vertical navigation requirements, but not below MSA.
- Track via the latest STAR clearance to the nominated runway, then fly the most suitable approach in accordance with ERSA EMERG Section 1.5.

BTLSR08-178