

TOWNSVILLE/TOWNSVILLE INTL, QLD (YBTL)

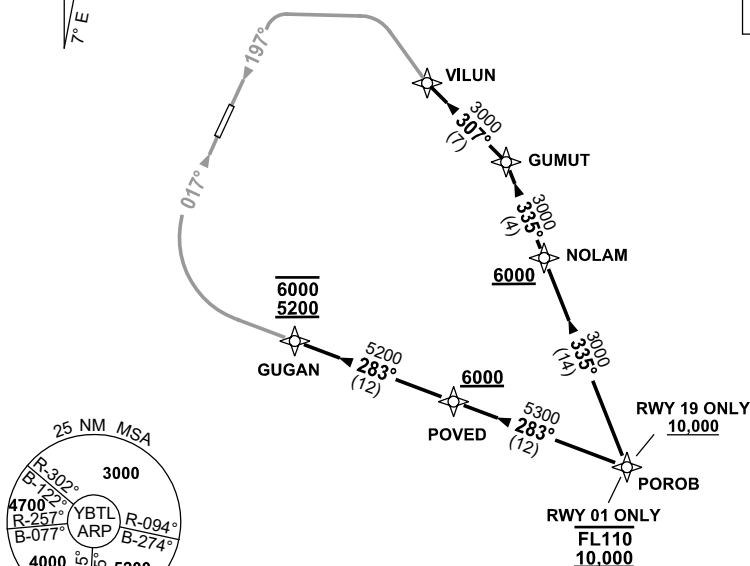
ATIS			ACD	SMC		TWR	APP/DEP	FIA (AH)	CTAF+AFRU (AH)	AWIS (AH)	Bearings are Magnetic Elevations in FEET AMSL
114.1	133.5	276	128.1	121.8	264.6	118.3	126.8	BN CEN 120.55	AFRU+PAL 118.3	133.5	

Bearings are Magnetic
Elevations in FEET AMSL

A diagram showing a vertical line and a line at an angle of 7 degrees to the vertical, labeled 7° E.

SPEED
MAX IAS 250KT
BELOW 10.000ft

RNP 1



10 NM MSA 3600

RWY 01 PAPA:

- From POROB track 283° to POVED
Cross POVED AT or ABV 6000ft

- Track 283° to GUGAN
Cross GUGAN BETWEEN 5200-6000ft
- From GUGAN track via RNP P RWY 01 (AR)

RWY 19 PAPA:

- From POROB track 335° to NOLAM
Cross NOLAM AT or ABV 6000ft

- Track 335° to GUMUT
- Turn LEFT track 307° to VILUN
- From VILUN track via RNP P RWY 19 (AR)

- Squawk 7600, comply with vertical navigation requirements, but not below MSA.
- Track via the latest STAR clearance to the nominated runway, then fly the most suitable approach in accordance with ERSA EMERG Section 1.5.

BTL SR04-178