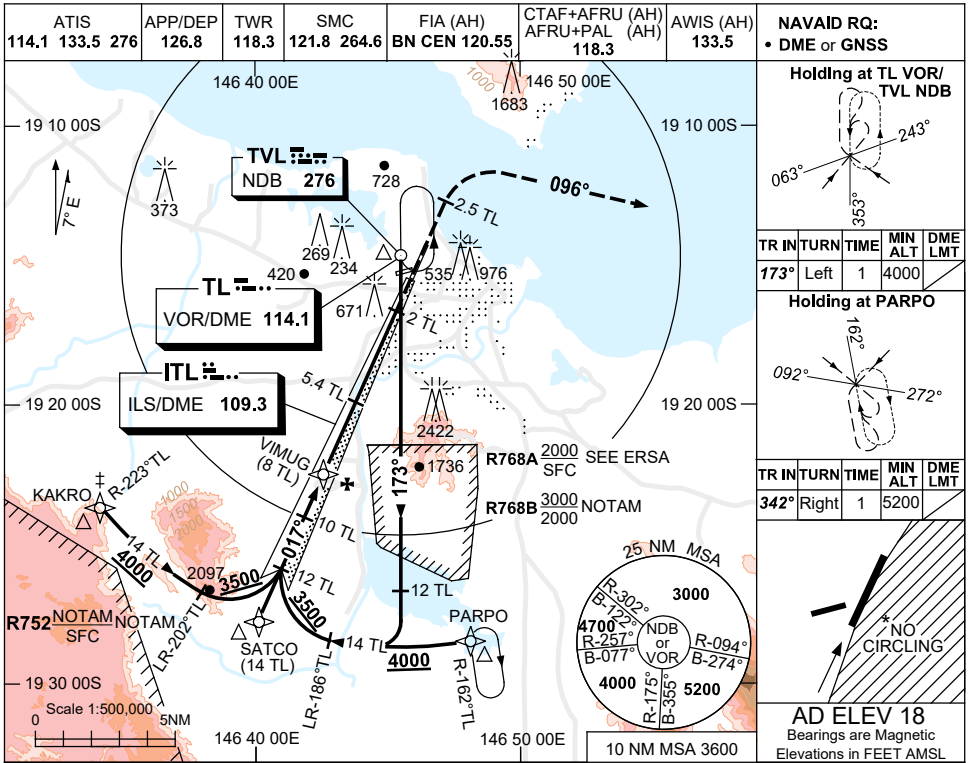


30 NOV 2023

USE QNH
TOWNSVILLE/TOWNSVILLE INTL, QLD (YBTL)

ILS-X or LOC-X RWY 01



NAVAID RG:
• DME or GNSS

Holding at TL VOR/ TVL NDB

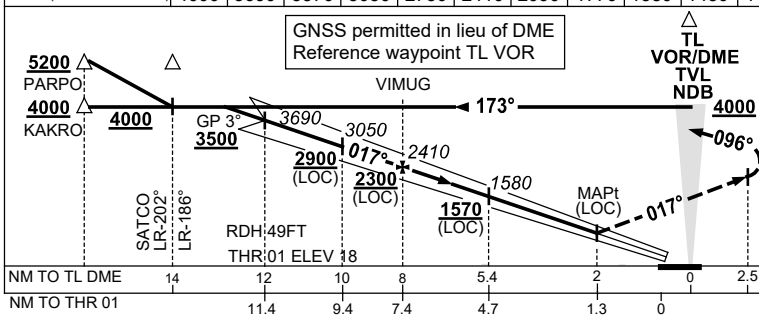
TR	IN	TURN	TIME	MIN ALT	DME LMT
173°	Left	1	4000		

Holding at PARPO

TR	IN	TURN	TIME	MIN ALT	DME LMT
342°	Right	1	5200		

AD ELEV 18
Bearings are Magnetic
Elevations in FEET AMSL

NM TO TL DME	13	12	11	10	9	8	7	6	5.4	5	4	3.2
ALT (3° APCH PATH)	4000	3690	3370	3050	2730	2410	2090	1770	1580	1450	1130	880



MISSED APPROACH:
 △ TRACK 017°
 AT 2.5 TL OUTBOUND
 TURN RIGHT,
 TRACK 096°
 CLIMB TO 3000FT OR
 AS DIRECTED BY ATC.

- NOTES**
- MAX IAS:
MAP TURN: 190KT
UNTIL TRACKING 096°
 - WHEN R752 ACTIVE
ATC RADAR RQ AND
APP VIA KAKRO NOT
AVBL.
 - NO CIRCLING IN
SECTOR EAST OF
RWY 01 & RWY 19.
 - ACFT MAY BE RADAR
VECTORED TO IAF.
 - SPECIAL ALTN MNM
900 /4 SKM. (NOT
APPLICABLE TO
LOC/DME).
 - COLOR: SEE
SPEC NOTICES.

CATEGORY	A	B	C	D
S-I ILS		370 (352)	1.6 (VIS 1.2 WITH ACTUAL QNH)	
S-I LOC		880 (862-4.6)		
CIRCLING *	1090 (1072-2.4)		1350 (1332-4.0)	1350 (1332-5.0)
ALTERNATE *	(1572-4.4)		(1832-6.0)	(1832-7.0)

Changes: KAKRO REPLACES FREDY, PARPO REPLACES KIRAN, Editorial. BTLII01-177