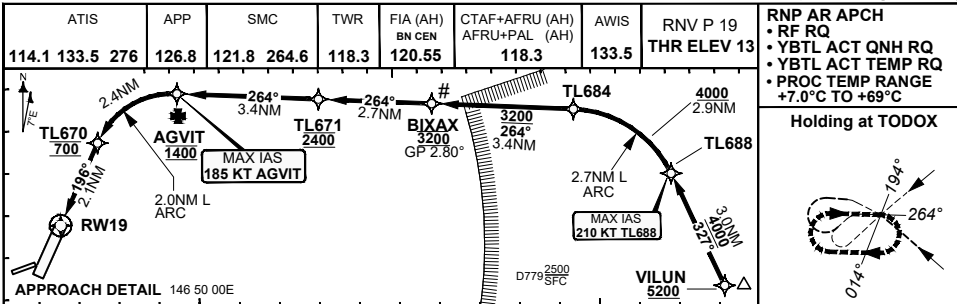


**FOR CASUALTY APPROVED  
OPERATORS ONLY  
USE QNH**

RNP P RWY 19 (AR)

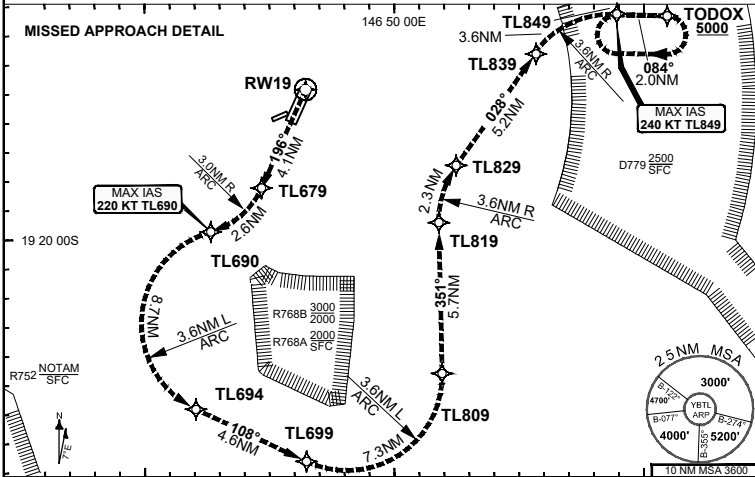
30 NOV 2023

**TOWNSVILLE/TOWNSVILLE INTL, QLD (YBTL)**

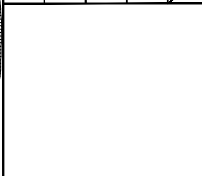


**RNP AR APCH**  
 • RF RQ  
 • YBTL ACT QNH RQ  
 • YBTL ACT TEMP RQ  
 • PROC TEMP RANGE  
 +7.0°C TO +69°C

**Holding at TODOX**

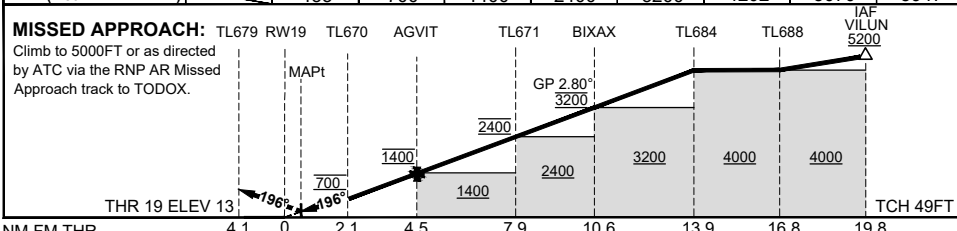


TR	INTURN	TIME	MIN ALT	DME LMT
084°	Right	1'	5000	



**AD ELEV 18**  
 Bearings are Magnetic  
 Elevations in FEET AMSL

	RW19	TL670	AGVIT	TL671	BIXAX	TL684	TL688	VILUN	
ALT (2.80° APCH PATH)		435	700	1400	2400	3200	4202	5070	5947



NM FM THR      4.1      0      2.1      4.5      7.9      10.6      13.9      16.8      19.8

CATEGORY	A	B	C	D
RNP (0.30)* (3.75% MAP)			DA(H) 435 (422-2.5)	DA(H) 435 (422-2.5)
CIRCLING	N/A		NOT AUTHORISED	NOT AUTHORISED
ALTERNATE				

1. APCH Path does not coincide with PAPI glide path 3.3°.
2. RNP 0.30 RQ FROM WPT VILUN TO RWY 19
- \*3. Minimum MAP gradient 3.75% to 4300 FT Required for Obstacle Clearance.
- #4. Latest Intercept Point (LIP)

202308030717 COPYRIGHT 2023 © NAVERUS, INC., USA. GE PROPRIETARY INFORMATION  
 Changes: EDITORIAL, WESTY TO TODOX BTLGN07-177

Prepared by GE Aviation - ICAO Doc 9905 Compliant

**DO NOT USE FOR NAVIGATION**

