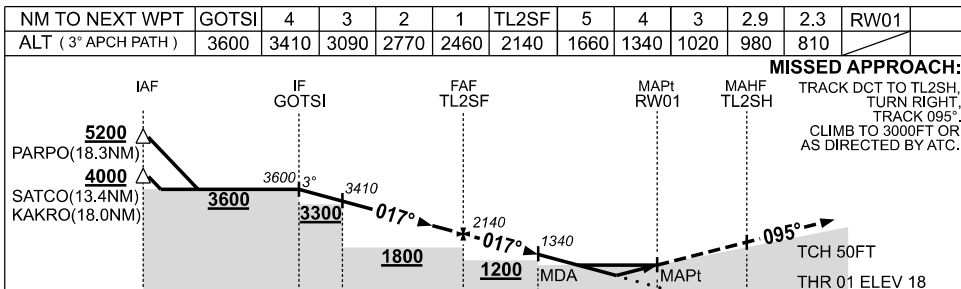
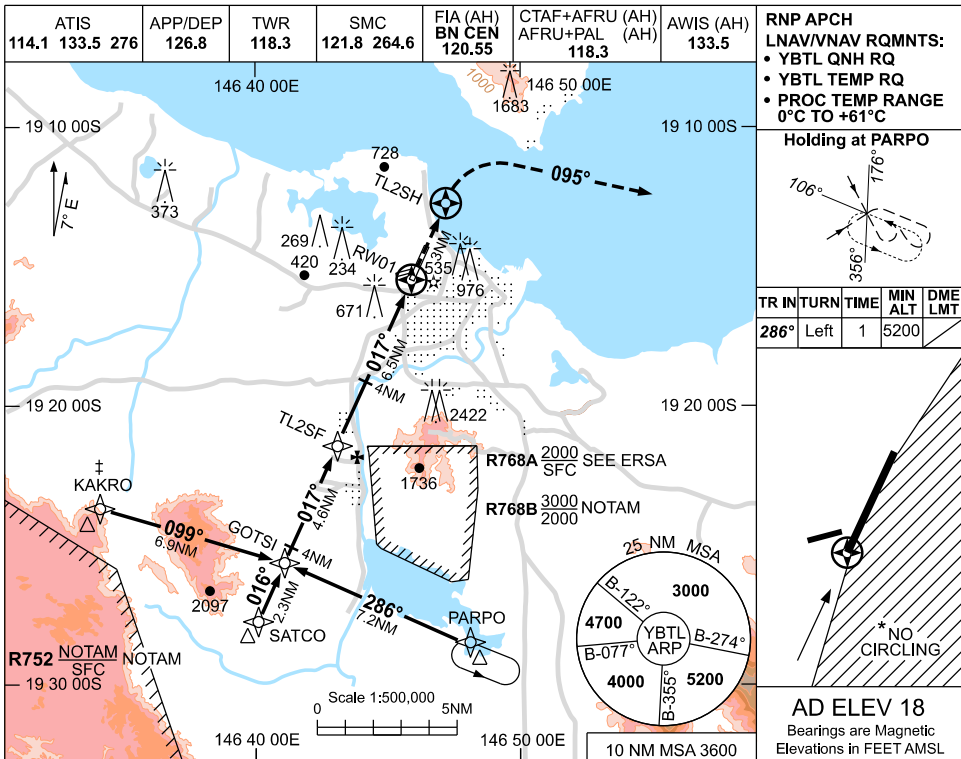


USE QNH

RNP Z RWY 01

09 JUL 2026

TOWNSVILLE/TOWNSVILLE INTL, QLD (YBTL)



**NOTES**

1. MAX IAS:  
INITIAL : 200KT.  
MAP TURN: 190KT.
- \* 2. NO CIRCLING IN  
SECTOR EAST OF  
RWY 01 & RWY 19.
- ‡ 3. WHEN R752 ACT ATC  
RADAR RQ AND APCH  
VIA KAKRO NOT AVBL.
4. COLOUR: SEE  
SPEC NOTICES.

CATEGORY	A	B	C	D
LNAV/VNAV		810 (792-4.2)		
LNAV		980 (962-5.0)		
CIRCLING *	1090 (1072-2.4)		1350 (1332-4.0)	1380 (1362-5.0)
ALTERNATE	(1572-4.4)		(1832-6.0)	(1862-7.0)

Changes: MINIMA.

BTLGN05-187