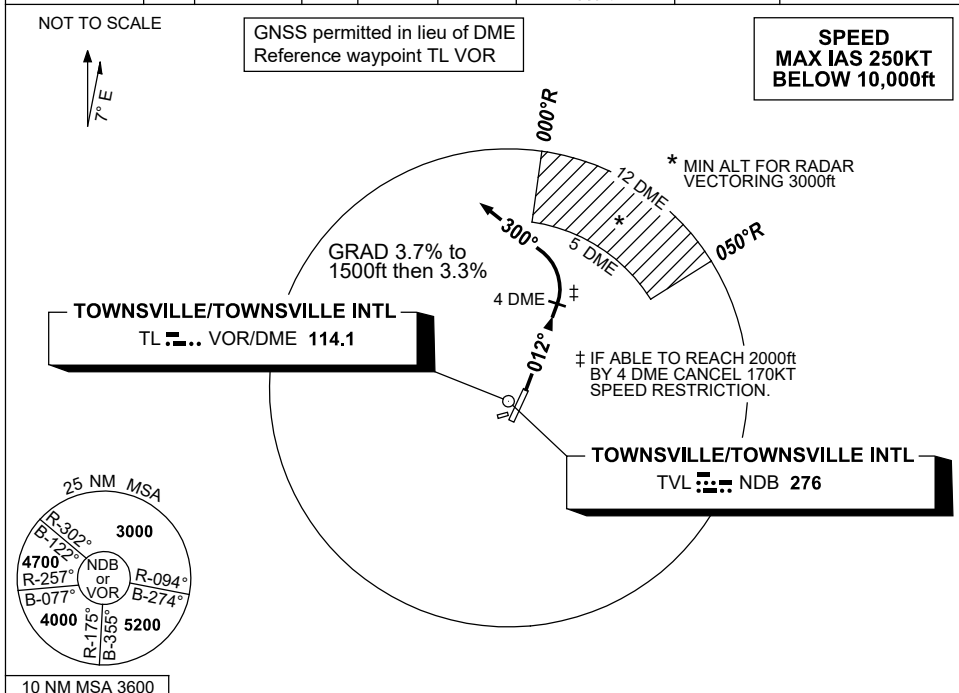


# STANDARD INSTRUMENT DEPARTURES (SID) TOWNSVILLE NORTH FOUR DEPARTURE - RWY 01 TOWNSVILLE/TOWNSVILLE INTL, QLD (YBTL)

24 MAR 2022

ATIS 114.1 133.5 276	ACD 128.1	SMC 121.8 264.6	TWR 118.3	APP/DEP 126.8	FIA (AH) BN CEN 120.55	CTAF+AFRU (AH) AFRU+PAL (AH) 118.3	AWIS (AH) 133.5	Bearings are Magnetic Elevations in FEET AMSL
-------------------------	--------------	--------------------	--------------	------------------	------------------------------	--	--------------------	--



## TOWNSVILLE NORTH FOUR DEPARTURE

### RWY 01

**MAX IAS 170KT ‡**

If able to reach 2000ft by 4 DME  
cancel 170KT speed restriction

- GRAD 3.7% to 1500ft then 3.3%
- NOT BEFORE DER, turn LEFT, track 012°
- **At 4 DME** turn LEFT, track 300°
- Contact Approach/Departures for Radar Vectors

## COMMUNICATIONS FAILURE PROCEDURE

On recognition of communication failure

- Squawk 7600
- Maintain last assigned vector for two minutes, and
- CLIMB IF NECESSARY TO MINIMUM SAFE ALTITUDE, to maintain terrain clearance, then
- Proceed in accordance with the latest ATC route clearance acknowledged.