

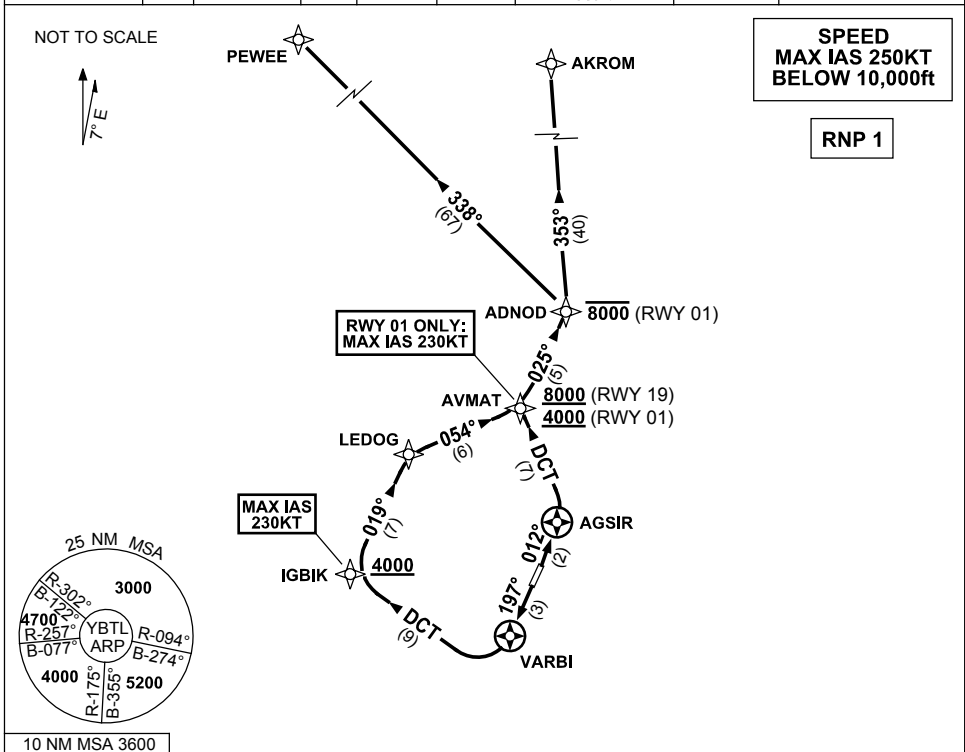
## STANDARD INSTRUMENT DEPARTURES (SID)

RWY 01/19 ADNOD ONE (RNAV)

## TOWNSVILLE/TOWNSVILLE INTL, QLD (YBTL)

13 JUN 2024

ATIS	ACD	SMC	TWR	APP/DEP	FIA (AH)	CTAF+AFRU (AH)	AWIS (AH)	Bearings are Magnetic Elevations in FEET AMSL
114.1 133.5 276	128.1	121.8 264.6	118.3	126.8	BN CEN 120.55	AFRU+PAL (AH) 118.3	133.5	



## ADNOD ONE DEPARTURE

## RWY 01

GRAD 5.4% to 1000ft then 3.3%

**MAX IAS 230KT UNTIL PASSING AVMAT**

- Track 012° to AGSIR
- Turn LEFT, track DCT to AVMAT
- Cross** AVMAT AT or ABV 4000ft  
(RQ GRAD to AVMAT: 7.0%)
- Turn RIGHT, track 025° to ADNOD
- Cross** ADNOD AT or BLW 8000ft

## RWY 19

GRAD 5.5% to 1300ft then 3.3%

**MAX IAS 230KT UNTIL PASSING IGBIK**

- Track 197° to VARBI
- Turn RIGHT, track DCT to IGBIK
- Cross** IGBIK AT or ABV 4000ft
- Turn RIGHT, track 019° to LEDOG
- Turn RIGHT, track 054° to AVMAT
- Cross** AVMAT AT or ABV 8000ft  
(RQ GRAD to AVMAT: 5.6%)
- Turn LEFT, track 025° to ADNOD

TRANSITIONS:

- AKROM** • From ADNOD turn LEFT, track 353° to AKROM
- PEWEE** • From ADNOD turn LEFT, track 338° to PEWEE