

STANDARD INSTRUMENT DEPARTURES (SID)
RWY 19 RURTO ONE (RNAV)
TOWNSVILLE/TOWNSVILLE INTL, QLD (YBTL)

24 MAR 2022

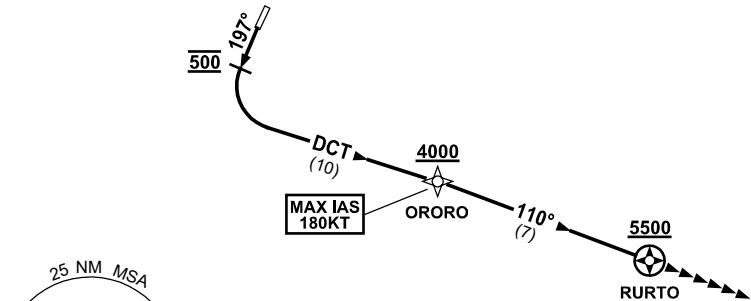
ATIS	ACD	SMC	TWR	APP/DEP	FIA (AH)	CTAF+AFRU (AH)	AWIS (AH)	Bearings are Magnetic Elevations in FEET AMSL
114.1 133.5 276	128.1	121.8 264.6	118.3	126.8	BN CEN 120.55	AFRU+PAL (AH) AFRU+PAL (AH) 118.3	133.5	

NOT TO SCALE



SPEED
MAX IAS 250KT
BELOW 10,000ft

RNP 1



10 NM MSA 3600

RURTO ONE DEPARTURE

RWY 19

- GRAD 8.0% to 1500ft then 3.3%
- MAX IAS 180KT UNTIL PASSING ORORO**
- Track 197°
 - AT 500FT turn LEFT, track DCT to ORORO
 - **Cross** ORORO AT or ABV 4000ft
(RQ GRAD to ORORO: 5.4% FM 1500ft)
 - Track 110° to RURTO
 - **Cross** RURTO AT or ABV 5500ft
(RQ GRAD to RURTO: 3.8% FM ORORO)
 - Expect radar vectors to cleared route

COMMUNICATIONS FAILURE PROCEDURE

- On recognition of communication failure
- Squawk 7600
 - Maintain last assigned vector for two minutes, and
 - CLIMB IF NECESSARY TO MINIMUM SAFE ALTITUDE, to maintain terrain clearance, then
 - Proceed in accordance with the latest ATC route clearance acknowledged.

Changes: Editorial.

BTLDP10-170