

STANDARD INSTRUMENT DEPARTURES (SID)

RWY 01/19 JEMMA THREE (RNAV)

TOWNSVILLE/TOWNSVILLE INTL, QLD (YBTL)

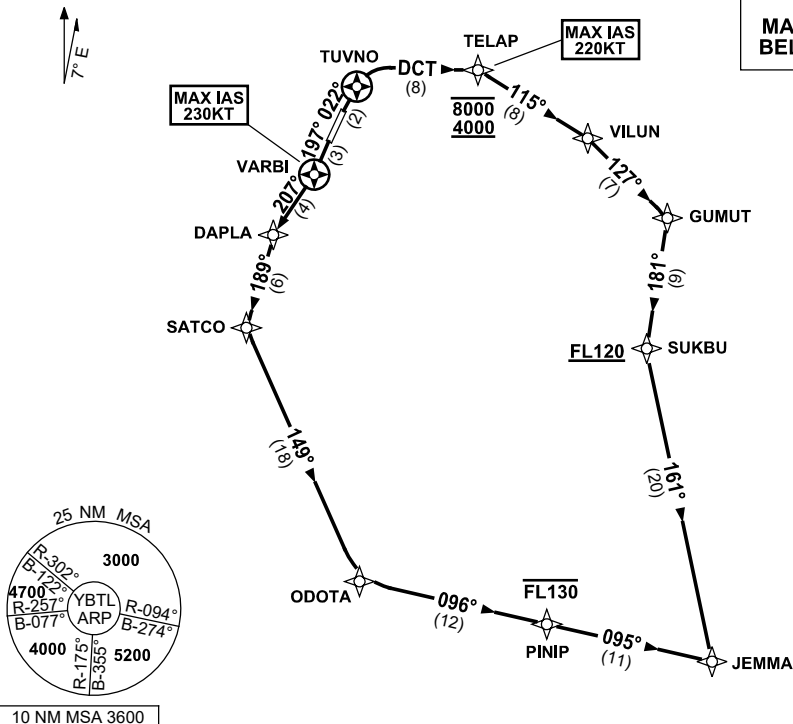
30 NOV 2023

ATIS	ACD	SMC	TWR	APP/DEP	FIA (AH)	CTAF+AFRU (AH)	AWIS (AH)	Bearings are Magnetic Elevations in FEET AMSL
114.1 133.5 276	128.1	121.8 264.6	118.3	126.8	BN CEN 120.55	AFRU+PAL 118.3	133.5	

NOT TO SCALE

SPEED
MAX IAS 250KT
BELOW 10,000ft

RNP 1



JEMMA THREE DEPARTURE

RWY 01

GRAD 4.9% to 1700ft then 3.3%

MAX IAS 220KT UNTIL PASSING TELAP

- Track 022° to TUVNO
- Turn RIGHT, track DCT to TELAP
Cross TELAP BETWEEN 4000-8000ft
(RQ GRAD to TELAP: 6.7%)
- Turn RIGHT, track 115° to VILUN
- Turn RIGHT, track 127° to GUMUT
- Turn RIGHT, track 181° to SUKBU
Cross SUKBU AT or ABV FL120
(RQ GRAD to SUKBU: 5.6% FM TELAP)
- Turn LEFT, track 161° to JEMMA

RWY 19

GRAD 5.5% to 1200ft then 3.3%

MAX IAS 230KT UNTIL PASSING VARBI

- Track 197° to VARBI
- Turn RIGHT, track 207° to DAPLA
- Turn LEFT, track 189° to SATCO
- Turn LEFT, track 149° to ODOTA
- Turn LEFT, track 096° to PINIP
Cross PINIP AT or BLW FL130
- Track 095° to JEMMA

Changes: TELAP REPLACES MAGGY, VALIDITY NUMBER, Editorial.

BTLDP09-177