

STANDARD INSTRUMENT DEPARTURES (SID)

RWY 01/19 CATEY ONE (RNAV)

TOWNSVILLE/TOWNSVILLE INTL, QLD (YBTL)

24 MAR 2022

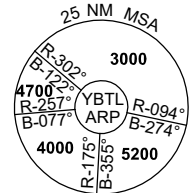
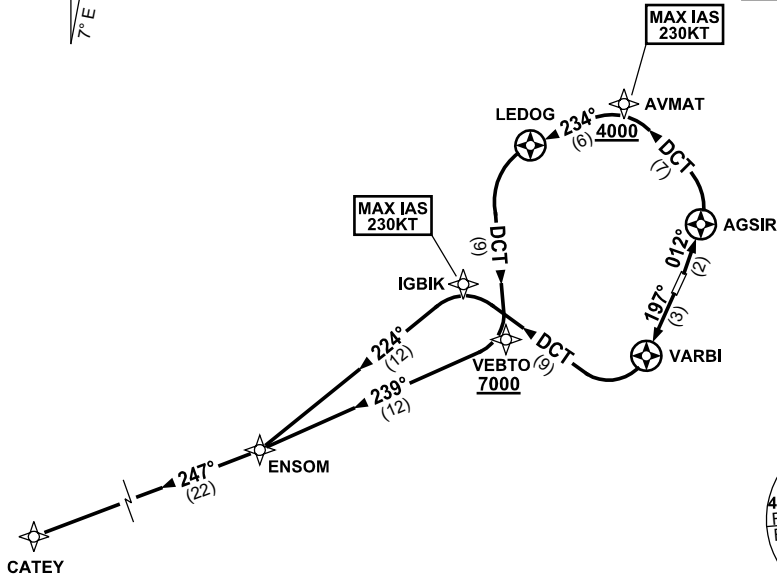
ATIS 114.1 133.5 276	ACD 128.1	SMC 121.8 264.6	TWR 118.3	APP/DEP 126.8	FIA (AH) BN CEN 120.55	CTAF+AFRU (AH) AFRU+PAL (AH) 118.3	AWIS (AH) 133.5	Bearings are Magnetic Elevations in FEET AMSL
-------------------------	--------------	--------------------	--------------	------------------	------------------------------	--	--------------------	--

NOT TO SCALE



SPEED
MAX IAS 250KT
BELOW 10,000ft

RNP 1



10 NM MSA 3600

CATEY ONE DEPARTURE

RWY 01

GRAD 5.4% to 1000ft then 3.3%

MAX IAS 230KT UNTIL PASSING AVMAT

- Track 012° to AGSIR
- Turn LEFT, track DCT to AVMAT
Cross AVMAT AT or ABV 4000ft
(RQ GRAD TO AVMAT: 7.0%)
- Turn LEFT, track 234° to LEDOG
- Turn LEFT, track DCT to VEBTO
Cross VEBTO AT or ABV 7000ft
- Turn RIGHT, track 239° to ENSOM
- Turn RIGHT, track 247° to CATEY

RWY 19

GRAD 5.5% to 1300ft then 3.3%

MAX IAS 230KT UNTIL PASSING IGBIK

- Track 197° to VARBI
- Turn RIGHT, track DCT to IGBIK
- Turn LEFT, track 224° to ENSOM
- Turn RIGHT, track 247° to CATEY