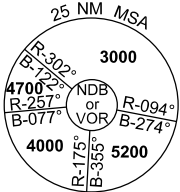


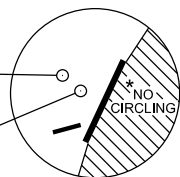
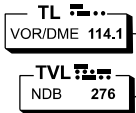
09 JUL 2026

ATIS 114.1 133.5 276	ACD 128.1	SMC 121.8 264.6	TWR 118.3	FIA (AH) BN CEN 120.55	CTAF+AFRU (AH) AFRU+PAL (AH) 118.3	AWIS (AH) 133.5	Bearings are Magnetic Elevations in FEET AMSL
-------------------------	--------------	--------------------	--------------	------------------------------	--	--------------------	--



**DME USING TL DME
REFERENCE WAYPOINT TL VOR**

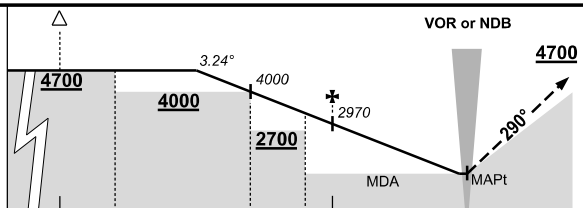
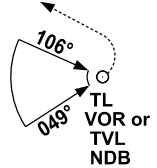
SPEED
MAX IAS 250KT
BELOW 10,000FT



* NO CIRCLING IN
SECTOR EAST OF
RWY 01 & RWY 19.

10 NM MSA 3600

SECTOR D

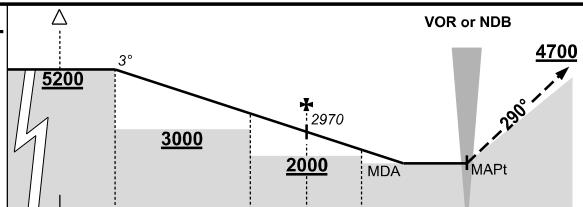
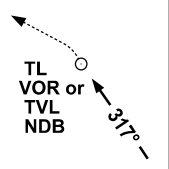


MISSED APPROACH:

TURN LEFT,
TRACK 290°. CLIMB TO 4700ft OR AS DIRECTED BY ATC.

NM TO TL VOR	25	15	13	8	6	5	4	3	2	1	0.3			
CIRCLING MINIMA	A,B: 1350-2.4			C: 1350-4.0			D: 1380-5.0							
NM TO TL VOR	10	9	8	7	6	5	4	3	2	1	0.3			
ALT(3.24° APCH PATH)	4700	4350	4000	3660	3310	2970	2620	2280	1940	1590	1350			

LINSU TO TL



MISSED APPROACH:

TURN LEFT,
TRACK 290°. CLIMB TO 4700ft OR AS DIRECTED BY ATC.

NM TO TL VOR	25	15	13	8	6	4								
CIRCLING MINIMA	A,B: 1800-2.4			C: 1800-4.0			D: 1800-5.0							
NM TO TL VOR	13	12	11	10	9	8	7	6	5	4	3	2.3		
ALT (3° APCH PATH)	5200	4880	4560	4240	3930	3610	3290	2970	2650	2340	2020	1800		