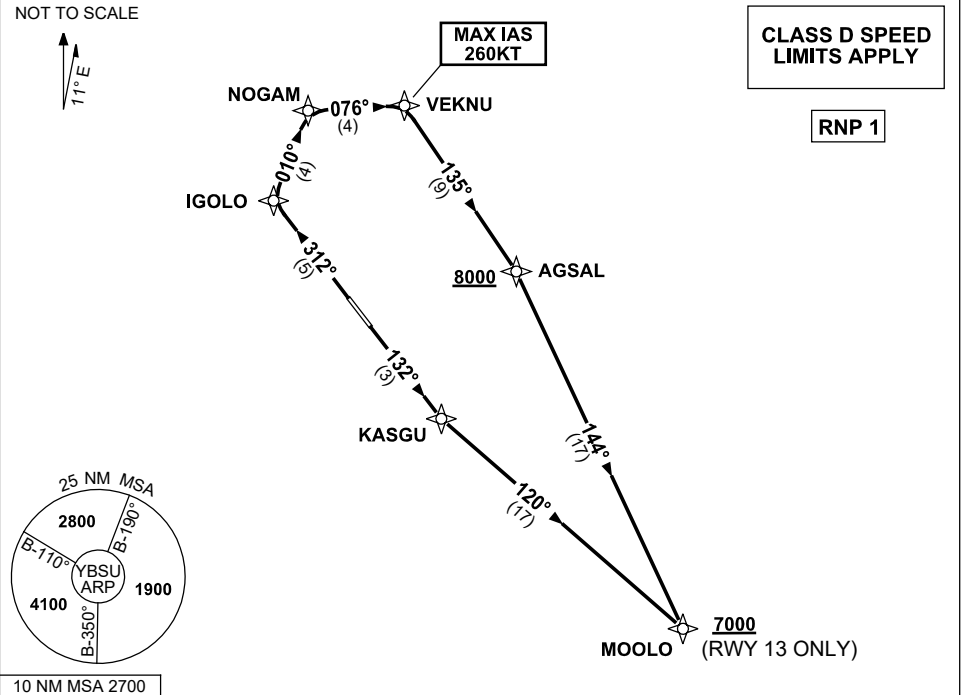


STANDARD INSTRUMENT DEPARTURES (SID)
MOOLO TWO DEPARTURE (RNAV)
SUNSHINE COAST, QLD (YBSU)

28 NOV 2024

ATIS/AWIS (AH) 114.2/119.8	SMC 121.1	TWR 124.4	FIA BN CEN 129.0 (CCT AREA) BN CEN 135.2 (ON GROUND AH)	CTAF+AFRU (AH) 124.4	AFRU+PAL 124.4	Bearings are Magnetic Elevations in FEET AMSL
-------------------------------	--------------	--------------	---	-------------------------	-------------------	--



MOOLO TWO DEPARTURE

RWY 13

- GRAD 3.3% (4.7% TO 2500ft)
- Track 132° to KASGU
- Turn LEFT, track 120° to MOOLO
Cross MOOLO AT or ABV 7000ft
(RQ GRAD TO MOOLO: 5.8%)

RWY 31

- GRAD 5% to 300ft, then 3.3%
- Track 312° to IGOLO
- Turn RIGHT, track 076° to VEKNU
- Turn RIGHT, track 010° to NOGAM
- Turn RIGHT, track 135° to AGSAL
MAX IAS 260KT to VEKNU
- Turn RIGHT, track 144° to MOOLO
Cross AGSAL AT or ABV 8000ft
(RQ GRAD TO AGSAL: 6%)

Changes: ALT RESTRICTION AT MOOLO.

BSUDP01-181