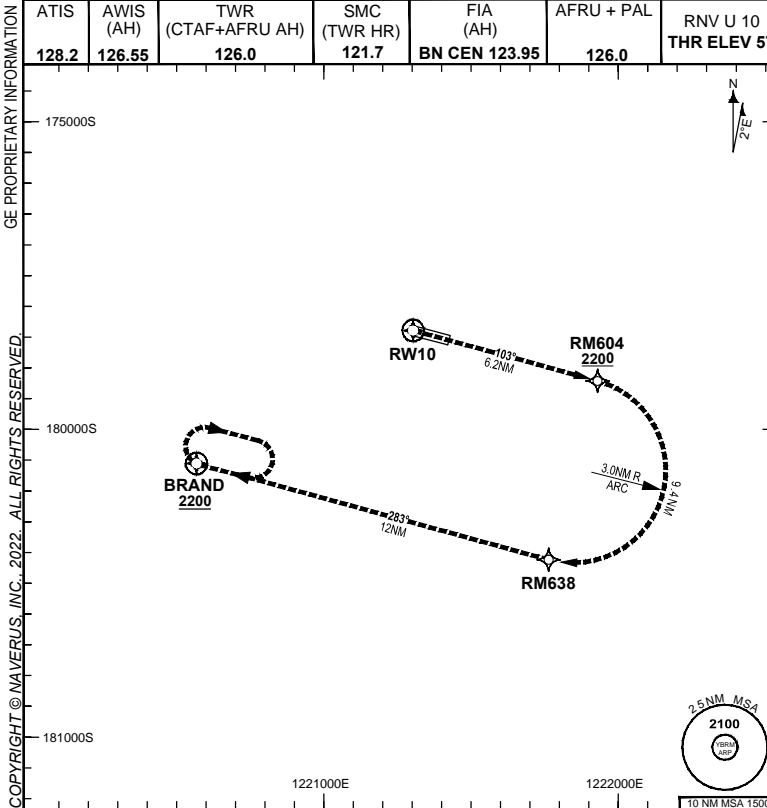


8 SEP 2022

USE QNH



**RNP AR APCH**

- RF RQ
- YBRM ACT QNH RQ
- YBRM ACT TEMP RQ
- PROC TEMP RANGE +8°C TO +42°C

**Holding at BRAND**

TR	INTURN	TIME	MIN ALT	DME LMT
283°	Right	1'	2200	

**AD ELEV 57**

Bearings are Magnetic  
Elevations in FEET AMSL

### ENGINE OUT MISSED APPROACH:

If unable to cross RM604 at 2200FT, advise ATC, and climb to 2200FT via the RNP AR Engine Out Missed Approach track to BRAND and hold as published.  
Acceleration altitude 1100FT QNH (1000FT AGL).  
Continue to climb in hold as necessary to 2200FT, or as directed by ATC. EO hold only. Maximum holding speed 230 KIAS.

