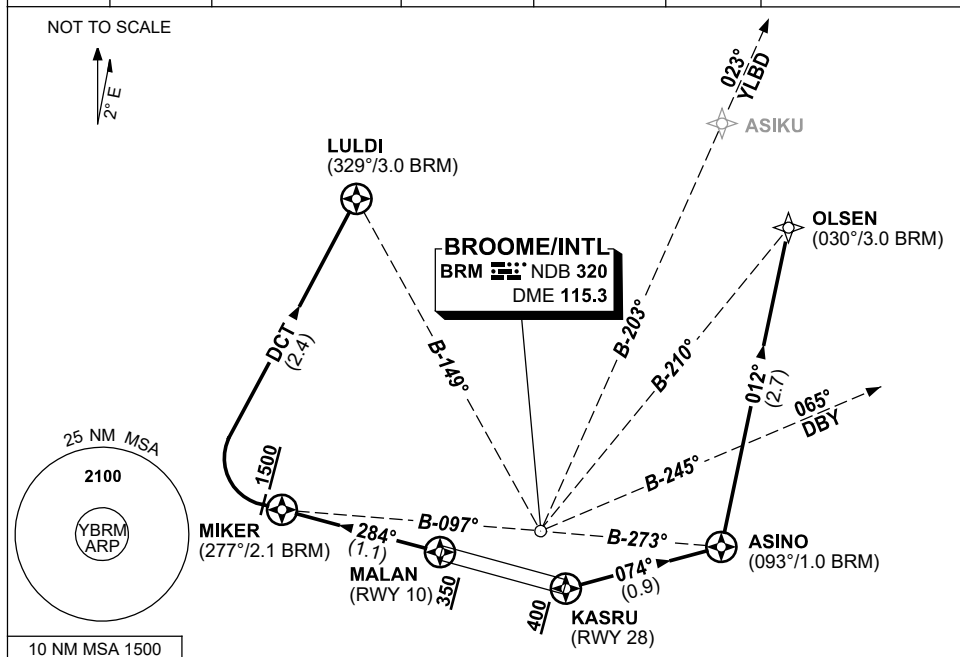


STANDARD INSTRUMENT DEPARTURES (SID) BROOME CAT H DEPARTURE (RNAV) RWY 10 & 28 BROOME/INTL, WA (YBRM)

16 JUN 2022

ATIS 128.2	AWIS (AH) 126.55	TWR (CTAF+AFRU AH) 126.0	SMC (TWR HR) 121.7	FIA (AH) BN CEN 123.95	AFRU+PAL 126.0	Bearings are Magnetic Elevations in FEET AMSL
---------------	---------------------	-----------------------------	-----------------------	---------------------------	-------------------	--



RWY 28

LULDI ONE (RNAV) DEPARTURE CAT H ONLY GRAD 5.0%

- FATO RWY 28 at intersection TWY G
- Proceed visually to MALAN
- Initial Departure Fix MALAN
 Cross MALAN AT or ABV 350ft
- Track 284° to MIKER
- AT or ABV 1500ft, but not before MIKER turn RIGHT
- Track DCT to LULDI (approx. 015°)
- After passing LULDI, track to intercept ATC cleared route by 5 DME

RWY 10

ASINO ONE (RNAV) DEPARTURE CAT H ONLY GRAD 5.0%

- FATO RWY 10 at intersection TWY F2
- Proceed visually to KASRU
- Initial Departure Fix KASRU
 Cross KASRU AT or ABV 400ft
- Turn LEFT, track 074° to ASINO
- Track to intercept ATC cleared route by 5 DME

For OLSEN

- Turn LEFT, track 012° to OLSEN
- Track to intercept ATC cleared route by 5 DME

COMMUNICATIONS FAILURE PROCEDURE

On recognition of communications failure

- Squawk 7600
- Maintain last ATC assigned track for two minutes, and if necessary, climb to a minimum safe altitude to maintain terrain clearance, then
- Proceed in accordance with the latest ATC route clearance acknowledged.

Changes: MAGNETIC TRACKS, Editorial.

BRMDP01-171