

**ROCKHAMPTON, QLD (YBRK)**

**12 JUN 2025**

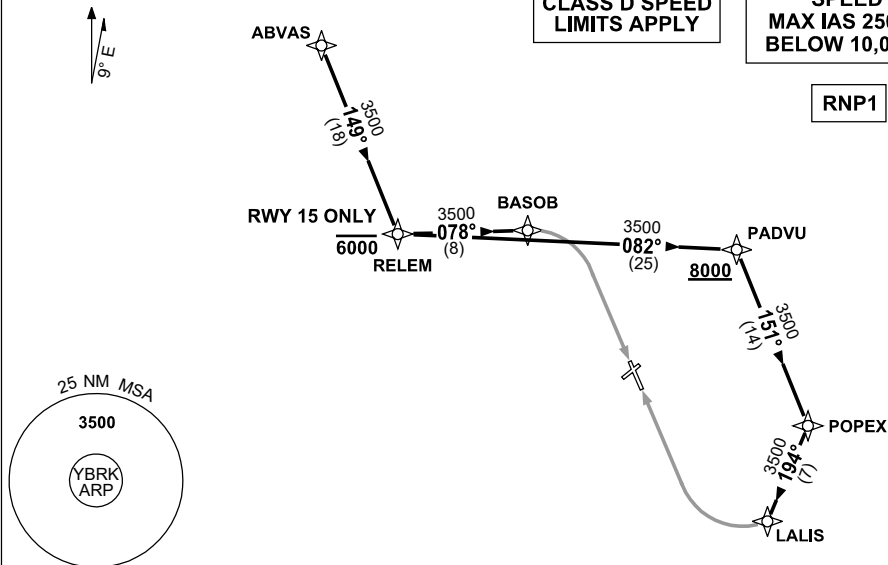
ATIS 116.9 128.5	AWIS 133.325	SMC 121.8	TWR 118.1	CORAL APP (RK) 123.75	CTAF+AFRU (AH) 118.1	AFRU+PAL (AH) 118.1	FIA (AH) BN CEN 119.55	Bearings are Magnetic Elevations in FEET AMSL
---------------------	-----------------	--------------	--------------	-----------------------------	----------------------------	---------------------------	---------------------------	--

NOT TO SCALE

**CLASS D SPEED  
LIMITS APPLY**

**SPEED**  
**MAX IAS 250KT**  
**BELOW 10,000ft**

## RNP1



10 NM MSA 3200

**ARRIVAL: ABVAS ONE**

## RWY 15

- From ABVAS track 149° to RELEM **Cross** RELEM AT or BLW 6000ft
- Turn **LEFT**, track 078° to BASOB
- Track via RNP RWY 15

## RWY 33

- From ABVAS track 149° to RELEM
- Turn LEFT, track 082° to PADVU  
**Cross** PADVU AT or ABV 8000ft
- Turn RIGHT, track 151° to POPEX
- Turn RIGHT, track 194° to LALIS
- Track via RNP RWY 33

## COMMUNICATIONS FAILURE: PROCEDURE IN IMC

- Squawk 7600, comply with vertical navigation requirements, but not below MSA.
- Track via the latest STAR clearance to the nominated runway, then fly the most suitable approach in accordance with ERSA EMERG Section 1.5.

Changes: AWIS ADDED, Ediotiral.

BRKSR01-183