

**STANDARD INSTRUMENT DEPARTURES (SID)
BUDGI TWO DEPARTURE (RNAV)
ROCKHAMPTON, QLD (YBRK)**

12 JUN 2025

ATIS 116.9 128.5	AWIS 133.325	SMC 121.8	TWR 118.1	CORAL APP (RK) 123.75	CTAF+AFRU (AH) 118.1	AFRU+PAL (AH) 118.1	FIA (AH) BN CEN 119.55	Bearings are Magnetic Elevations in FEET AMSL
---------------------	-----------------	--------------	--------------	-----------------------------	----------------------------	---------------------------	---------------------------	--

NOT TO SCALE

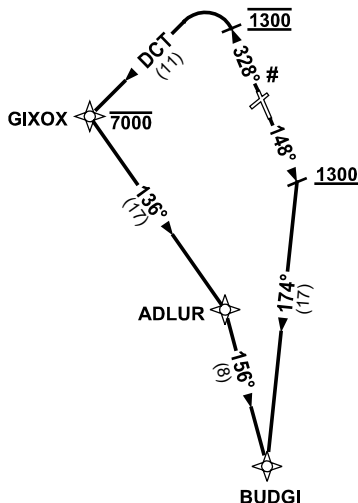
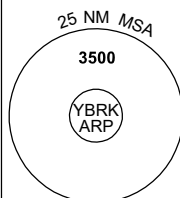


**CLASS D SPEED
LIMITS APPLY**

**SPEED
MAX IAS 250KT
BELOW 10,000ft**

RNP1

**# CAUTION:
TREES IN RWY 15
DEP AREAS**



10 NM MSA 3200

BUDGI TWO DEPARTURE

RWY 15

- GRAD 3.3%
- Track 148°
- AT or ABV 1300ft turn RIGHT, intercept 174° to BUDGI, thence as cleared

RWY 33

- GRAD 3.4% to 2500ft, then 3.3%
- Track 328°
- AT 1300ft turn LEFT, track DCT to GIXOX
Cross GIXOX AT or BLW 7000ft
- Turn LEFT, track 136° to ADLUR
- Turn RIGHT, track 156° to BUDGI, thence as cleared

Changes: AWIS ADDED, Editorial.

BRKDP02-183