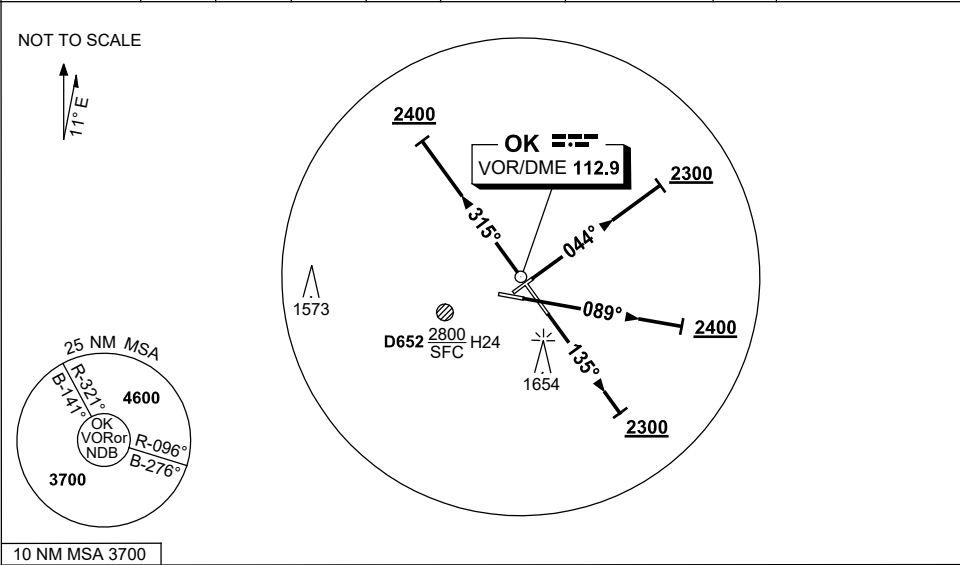


STANDARD INSTRUMENT DEPARTURES (SID)  
OAKEY SIX DEPARTURE (RADAR)  
OAKEY, QLD (YBOK)

5 SEP 2024

ATIS 124.3 254	APP 125.4	ACD 133.35	TWR 120.1	SMC 121.9	FIA (AH) BN CEN 121.2	CTAF+AFRU (AH) 127.65	PAL 121.3	Bearings are Magnetic. Elevations in FEET AMSL
-------------------	--------------	---------------	--------------	--------------	--------------------------	--------------------------	--------------	---



OAKEY SIX DEPARTURE (RADAR)

RWY 05

- GRAD 3.3%
- Track 044°
  - At 2300FT, but not before DER, turn to assigned heading or track
  - When directed contact Approach for radar vectors

RWY 09

- GRAD 3.6% to 2800FT, thence 3.3% (5% to 2400FT)
- Track 089°
  - At 2400FT, but not before DER, turn to assigned heading or track
  - When directed contact Approach for radar vectors

RWY 14

- GRAD 4.1% to 2800FT, thence 3.3% (5% to 2300FT)
- Track 135°
  - At 2300FT, but not before DER, turn to assigned heading or track
  - When directed contact Approach for radar vectors

RWY 32

- GRAD 3.3%
- Track 315°
  - At 2400FT but not before DER, turn to assigned heading or track
  - When directed contact Approach for radar vectors

COMMUNICATIONS FAILURE PROCEDURE

- On recognition of communication failure:
- Squawk 7600
  - Maintain last assigned vector for two minutes and, if necessary, climb to minimum safe altitude to maintain terrain clearance, then
  - Proceed in accordance with the latest ATC route clearance acknowledged.