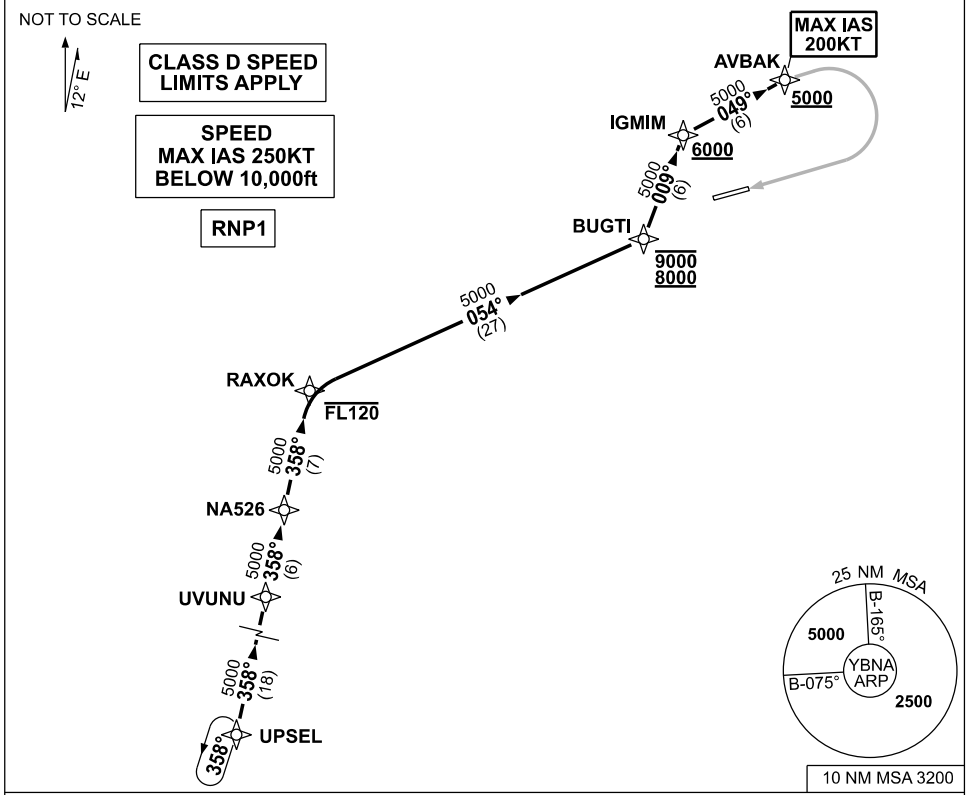


**STANDARD INSTRUMENT ARRIVAL (STAR)
UPSEL ONE YANKEE ARRIVAL (RNAV)
BALLINA/BYRON GATEWAY, NSW (YBNA)**

09 JUL 2026

ATIS 128.65	AWIS 134.8	APP/DEP 118.35	TWR 124.2	FIA (AH) BN CEN 120.3	CTAF+AFRU (AH) 124.2	PAL+AA 121.3	Bearings are Magnetic Elevations in FEET AMSL
----------------	---------------	-------------------	--------------	--------------------------	-------------------------	-----------------	--



UPSEL ONE YANKEE ARRIVAL

RWY 24:

- From UPSEL, track 358° to UVUNU
- Track 358° to NA526
- Track 358° to RAXOK
- **Cross** RAXOK AT or BLW FL120
- Turn RIGHT track 054° to BUGTI
- **Cross** BUGTI BTN 8000ft and 9000ft
- Turn LEFT track 009° to IGMIM
- **Cross** IGMIM AT or ABV 6000ft
- Turn RIGHT track 049° to AVBAK
- **Cross** AVBAK AT or ABV 5000ft
- MAX IAS 200KT at AVBAK
- Track via RNP Y RWY 24 (AR)

COMMUNICATIONS FAILURE: PROCEDURE IN IMC

- Squawk 7600, comply with vertical navigation requirements, but not below MSA.
- Track via the latest STAR clearance to the nominated runway, then fly the most suitable approach in accordance with ERS A EMERG Section 1.5.

Changes: NEW PROCEDURE, FREQ.

BNASR04-187