

**STANDARD INSTRUMENT ARRIVAL (STAR)  
UPSEL ONE BRAVO ARRIVAL (RNAV)  
BALLINA/BYRON GATEWAY, NSW (YBNA)**

**09 JUL 2026**

ATIS 128.65	AWIS 134.8	APP/DEP 118.35	TWR 124.2	FIA (AH) BN CEN 120.3	CTAF+AFRU (AH) 124.2	PAL+AA 121.3	Bearings are Magnetic Elevations in FEET AMSL
----------------	---------------	-------------------	--------------	--------------------------	-------------------------	-----------------	--

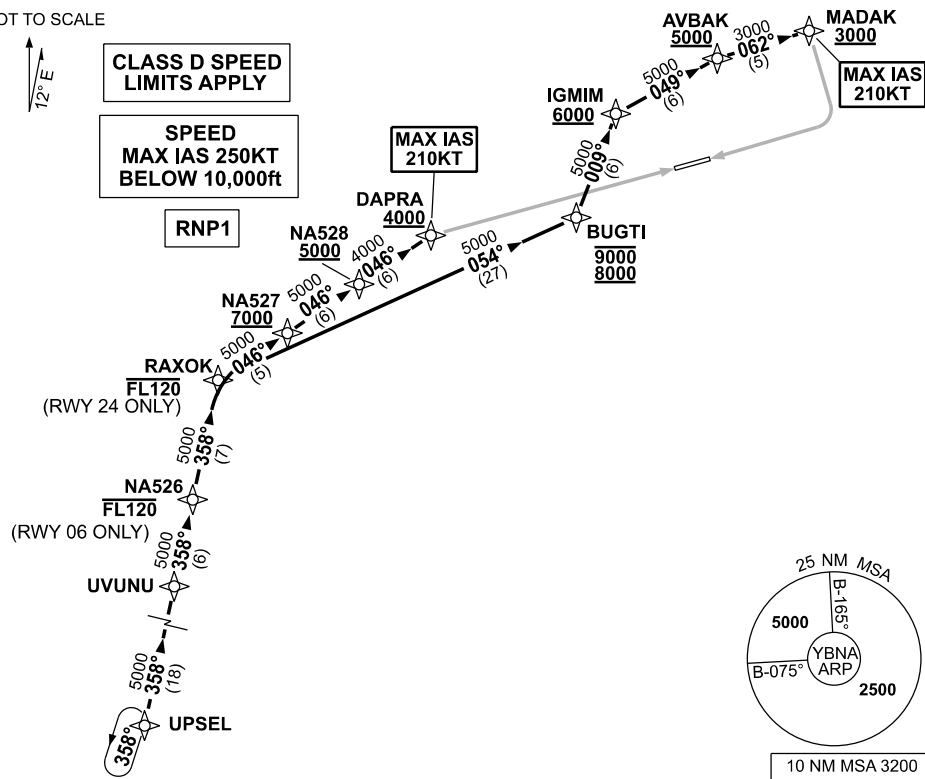
NOT TO SCALE



**CLASS D SPEED  
LIMITS APPLY**

**SPEED  
MAX IAS 250KT  
BELOW 10,000ft**

**MAX IAS  
210KT**



**UPSEL ONE BRAVO ARRIVAL**

**RWY 06:**

- From UPSEL track 358° to UVUNU
- Track 358° to NA526
- **Cross** NA526 AT or BLW FL120
- Track 358° to RAXOK
- Turn RIGHT track 046° to NA527
- **Cross** NA527 AT or ABV 7000ft
- Track 046° to NA528
- **Cross** NA528 AT or ABV 5000ft
- Track 046° to DAPRA
- **Cross** DAPRA AT or ABV 4000ft
- **MAX IAS 210KT** at DAPRA
- Track via RNP Z RWY 06

**RWY 24:**

- From UPSEL track 358° to UVUNU
- Track 358° to NA526
- Track 358° to RAXOK
- **Cross** RAXOK AT or BLW FL120
- Turn RIGHT track 054° to BUGTI
- **Cross** BUGTI BTN 8000ft and 9000ft
- Turn LEFT track 009° to IGMIM
- **Cross** IGMIM AT or ABV 6000ft
- Turn RIGHT track 049° to AVBAK
- **Cross** AVBAK AT or ABV 5000ft
- Turn RIGHT track 062° to MADAK
- **Cross** MADAK AT or ABV 3000ft
- **MAX IAS 210KT** at MADAK
- Track via RNP Z RWY 24

**COMMUNICATIONS FAILURE: PROCEDURE IN IMC**

- Squawk 7600, comply with vertical navigation requirements, but not below MSA.
- Track via the latest STAR clearance to the nominated runway, then fly the most suitable approach in accordance with ERS A EMERG Section 1.5.

Changes: NEW PROCEDURE, FREQ.

BNASR03-187