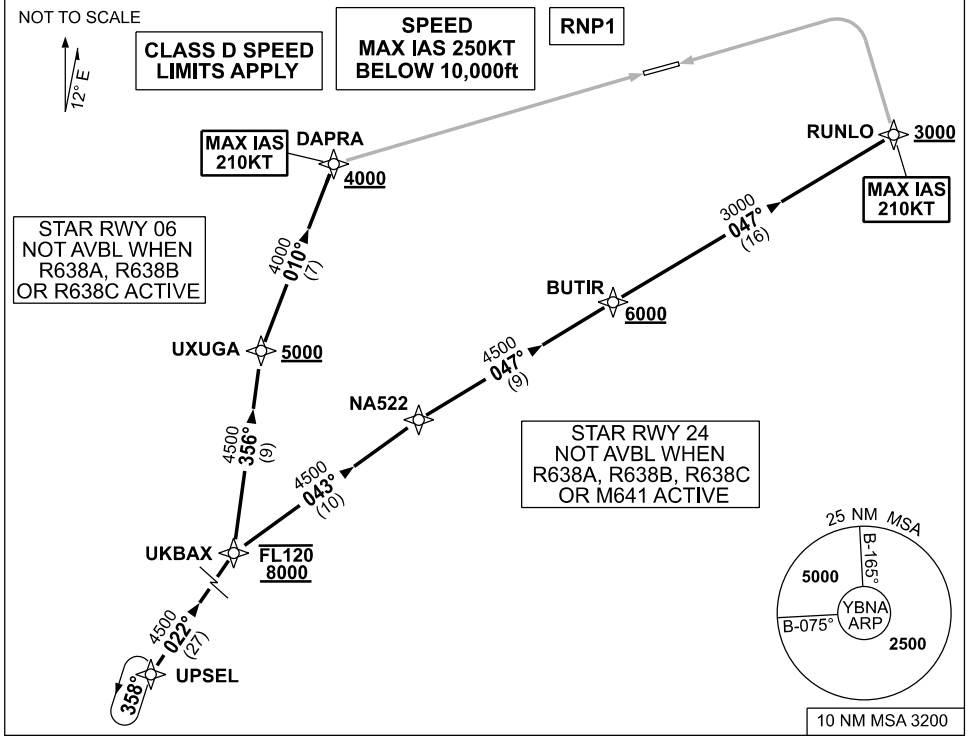


**STANDARD INSTRUMENT ARRIVAL (STAR)
UPSEL ONE ALPHA ARRIVAL (RNAV)
BALLINA/BYRON GATEWAY, NSW (YBNA)**

09 JUL 2026

| | | | | | | | |
|----------------|---------------|-------------------|--------------|--------------------------|-------------------------|-----------------|--|
| ATIS 128.65 | AWIS 134.8 | APP/DEP 118.35 | TWR 124.2 | FIA (AH) BN CEN 120.3 | CTAF+AFRU (AH) 124.2 | PAL+AA 121.3 | Bearings are Magnetic Elevations in FEET AMSL |
|----------------|---------------|-------------------|--------------|--------------------------|-------------------------|-----------------|--|



UPSEL ONE ALPHA ARRIVAL

RWY 06:

- From UPSEL track 022° to UKBAX
Cross UKBAX BTN 8000ft and FL120
- Turn LEFT track 356° to UXUGA
Cross UXUGA AT or ABV 5000ft
- Turn RIGHT track 010° to DAPRA
Cross DAPRA AT or ABV 4000ft
MAX IAS 210KT at DAPRA
- Track via RNP Z RWY 06

RWY 24:

- From UPSEL track 022° to UKBAX
Cross UKBAX BTN 8000ft and FL120
- Turn RIGHT track 043° to NA522
- Turn RIGHT track 047° to BUTIR
Cross NA523 AT or ABV 6000ft
- Track 047° to RUNLO
Cross RUNLO AT or ABV 3000ft
MAX IAS 210KT at RUNLO
- Track via RNP Z RWY 24

COMMUNICATIONS FAILURE: PROCEDURE IN IMC

- Squawk 7600, comply with vertical navigation requirements, but not below MSA.
- Track via the latest STAR clearance to the nominated runway, then fly the most suitable approach in accordance with ERS A EMERG Section 1.5.

Changes: NEW PROCEDURE, FREQ.

BNASR02-187