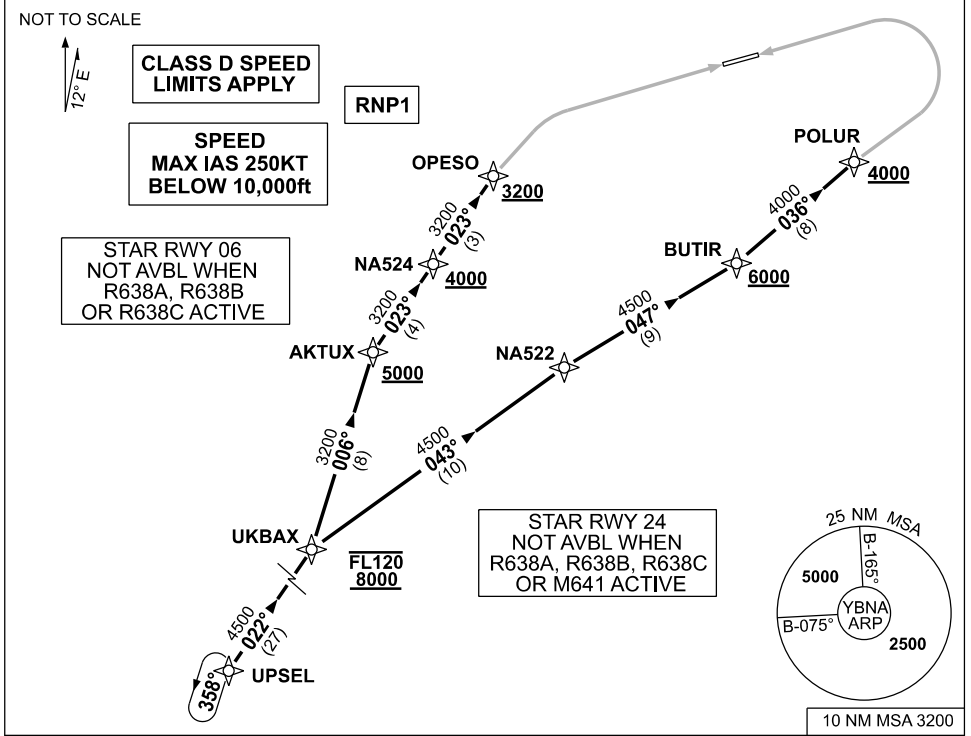


**STANDARD INSTRUMENT ARRIVAL (STAR)  
UPSEL ONE X-RAY ARRIVAL (RNAV)  
BALLINA/BYRON GATEWAY, NSW (YBNA)**

**09 JUL 2026**

ATIS 128.65	AWIS 134.8	APP/DEP 118.35	TWR 124.2	FIA (AH) BN CEN 120.3	CTAF+AFRU (AH) 124.2	PAL+AA 121.3	Bearings are Magnetic Elevations in FEET AMSL
----------------	---------------	-------------------	--------------	--------------------------	-------------------------	-----------------	--



**UPSEL ONE X-RAY ARRIVAL**

**RWY 06:**

- From UPSEL track 022° to UKBAX  
**Cross** UKBAX BTN 8000ft and FL120
- Turn LEFT track 006° to AKTUX  
**Cross** AKTUX AT or ABV 5000ft
- Turn RIGHT track 023° to NA524  
**Cross** NA524 AT or ABV 4000ft
- Track 023° to OPESO  
**Cross** OPESO AT or ABV 3200ft
- Track via RNP X RWY 06

**RWY 24:**

- From UPSEL track 022° to UKBAX  
**Cross** UKBAX BTN 8000ft and FL120
- Turn RIGHT track 043° to NA522
- Turn RIGHT track 047° to BUTIR  
**Cross** BUTIR AT or ABV 6000ft
- Turn LEFT track 036° to POLUR  
**Cross** POLUR AT or ABV 4000ft
- Track via RNP X RWY 24

**COMMUNICATIONS FAILURE: PROCEDURE IN IMC**

- Squawk 7600, comply with vertical navigation requirements, but not below MSA.
- Track via the latest STAR clearance to the nominated runway, then fly the most suitable approach in accordance with ERS A EMERG Section 1.5.

Changes: NEW PROCEDURE, FREQ.

BNASR01-187