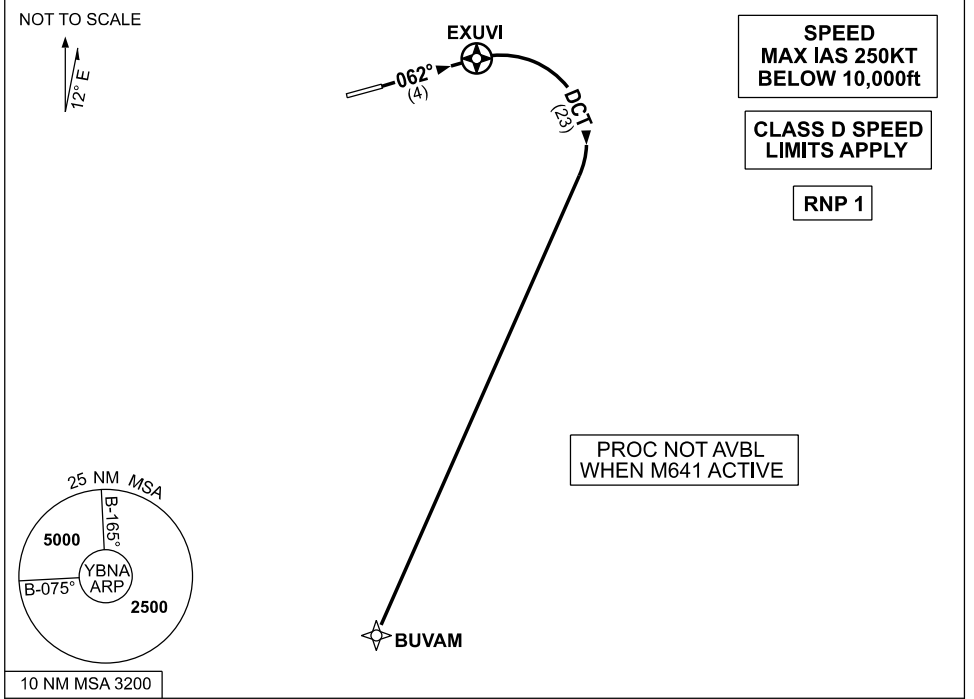


**STANDARD INSTRUMENT DEPARTURES (SID)
 BUVAM ONE (NON-JET) (RNAV)
 BALLINA/BYRON GATEWAY, NSW (YBNA)**

09 JUL 2026

ATIS 128.65	AWIS 134.8	TWR 124.2	APP/DEP 118.35	FIA (AH) BN CEN 120.3	CTAF+AFRU (AH) 124.2	PAL+AA 121.3	Bearings are Magnetic Elevations in FEET AMSL
----------------	---------------	--------------	-------------------	--------------------------	-------------------------	-----------------	--



BUVAM ONE (NON-JET)

RWY 06:
 GRAD 4.7% to 300ft,
 then 3.3% (5.6% to 7000ft)

- Track 062° to EXUVI
- Turn RIGHT track DCT to BUVAM

COMMUNICATIONS FAILURE PROCEDURE

On recognition of communication failure:

- Squawk 7600
- Maintain last assigned vector for two minutes and, if necessary, climb to minimum safe altitude to maintain terrain clearance, then
- Proceed in accordance with the latest ATC route clearance acknowledged

Changes: NEW PROCEDURE, FREQ. BNADP02-187