

**STANDARD INSTRUMENT DEPARTURES (SID)
IDNER ONE DEPARTURE (RNAV)
BALLINA/BYRON GATEWAY, NSW (YBNA)**

09 JUL 2026

ATIS 128.65	AWIS 134.8	TWR 124.2	APP/DEP 118.35	FIA (AH) BN CEN 120.3	CTAF+AFRU (AH) 124.2	PAL+AA 121.3	Bearings are Magnetic Elevations in FEET AMSL
-----------------------	----------------------	---------------------	--------------------------	---------------------------------	--------------------------------	------------------------	--------------------------------------------------

NOT TO SCALE

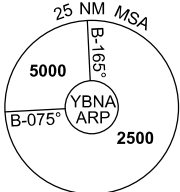
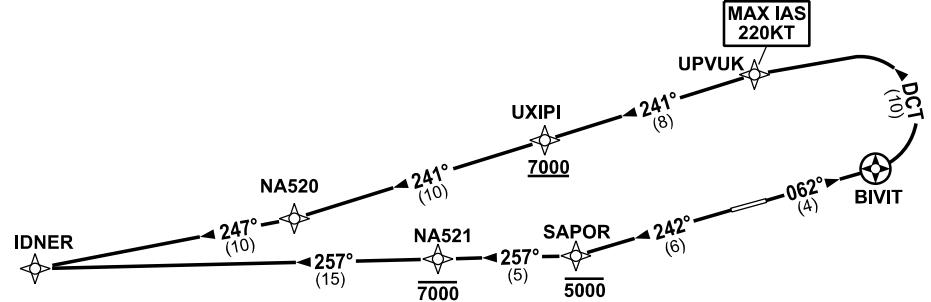


**CLASS D SPEED
LIMITS APPLY**

**SPEED
MAX IAS 250KT
BELOW 10,000ft**

RNP 1

**MAX IAS
220KT**



10 NM MSA 3200

IDNER ONE DEPARTURE

RWY 24

- GRAD 3.9% to 700ft, then 3.3% (5.1% to 2000ft)
- Track 242° to SAPOR
Cross SAPOR AT or BLW 5000ft
- Turn RIGHT track 257° to NA521
Cross NA521 AT or BLW 7000ft
- Track 257° to IDNER

RWY 06

- GRAD 4.7% to 300ft, then 3.3%
MAX IAS 220KT until UPVUK
- Track 062° to BIVIT
- Turn LEFT track 241° to UXIPI
Cross UXIPI AT or ABV 7000ft (RQ GRAD TO UXIPI: 5.9%)
- Track 241° to NA520
- Turn RIGHT track 247° to IDNER

COMMUNICATIONS FAILURE PROCEDURE

- On recognition of communication failure:
 - Squawk 7600
 - Maintain last assigned vector for two minutes and, if necessary, climb to minimum safe altitude to maintain terrain clearance, then
 - Proceed in accordance with the latest ATC route clearance acknowledged

Changes: NEW PROCEDURE, FREQ.

BNADP01-187