

# STANDARD INSTRUMENT DEPARTURES (SID) MUNAR ONE DEPARTURE (RNAV) MACKAY, QLD (YBMK)

30 NOV 2023

|                     |              |              |                             |                         |                        |                          |  |
|---------------------|--------------|--------------|-----------------------------|-------------------------|------------------------|--------------------------|--|
| ATIS<br>112.7 128.0 | SMC<br>121.7 | TWR<br>124.5 | CORAL<br>APP (MK)<br>125.65 | CTAF+AFRU (AH)<br>124.5 | AFRU+PAL (AH)<br>124.5 | FIA (AH)<br>BN CEN 135.5 | Bearings are Magnetic<br>Elevations in FEET AMSL |
|---------------------|--------------|--------------|-----------------------------|-------------------------|------------------------|--------------------------|--|

NOT TO SCALE

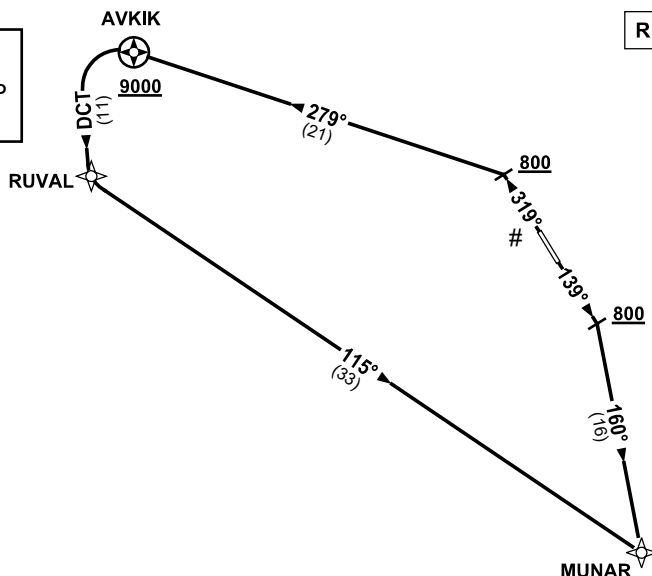


**CLASS D SPEED  
LIMITS APPLY**

**SPEED  
MAX IAS 250KT  
BELOW 10,000FT**

**RNP1**

**# CAUTION:**  
1. TREES IN  
RWY 32 DEP  
AREA.



10 NM MSA 3100

## MUNAR ONE DEPARTURE

### RWY 14

- GRAD 3.3%
- Track 139°
- AT or ABV 800ft turn RIGHT, intercept 160° to MUNAR, thence as cleared

### RWY 32

- GRAD 3.7% to 800ft, then 3.3% (6.0% to 9000ft)
- Track 319°
- AT or ABV 800ft turn LEFT, intercept 279° to AVKIK
- **Cross AVKIK AT or ABV 9000ft**
- Turn LEFT, track DCT to RUVAL
- Turn LEFT, track 115° to MUNAR, thence as cleared

Changes: AVKIK REPLACES HARPO, MUNAR REPLACES POONA, CHART TITLE, Editorial.

BMKDP03-177