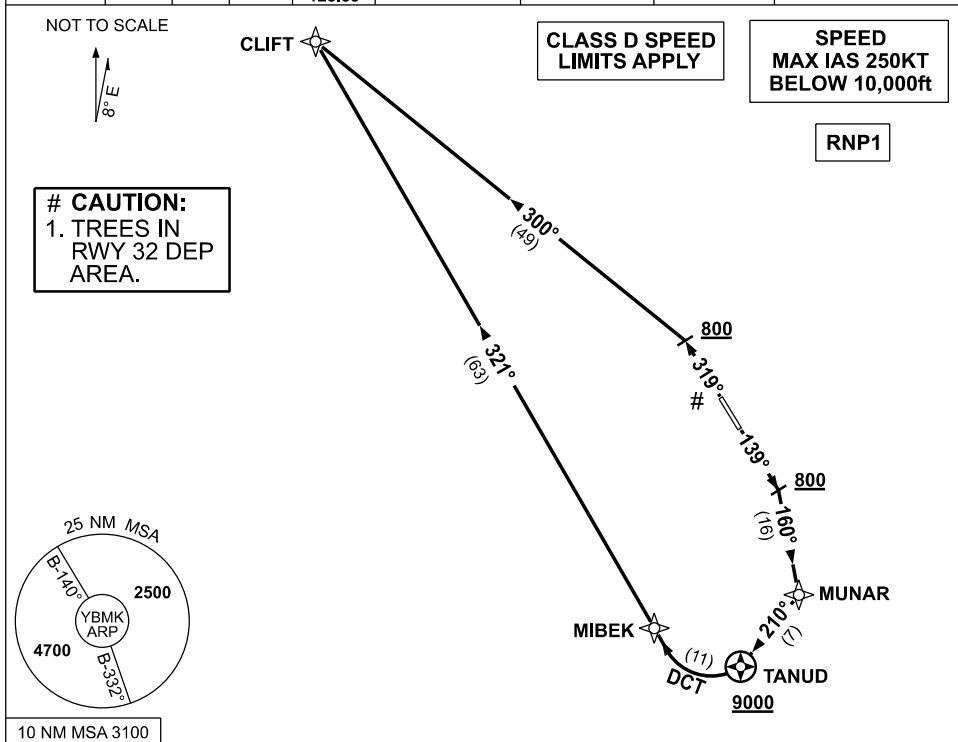


# STANDARD INSTRUMENT DEPARTURES (SID) CLIFT THREE DEPARTURE (RNAV) MACKAY, QLD (YBMK)

19 MAR 2026

ATIS 112.7 128.0	AWIS 133.05	SMC 121.7	TWR 124.5	CORAL APP (MK) 125.65	CTAF+AFRU (AH) 124.5	AFRU+PAL (AH) 124.5	FIA (AH) BN CEN 135.5	Bearings are Magnetic Elevations in FEET AMSL
---------------------	----------------	--------------	--------------	-----------------------------	-------------------------	------------------------	--------------------------	--



## CLIFT THREE DEPARTURE

### RWY 14

- GRAD 3.3% (5.6% to 9000ft)
- Track 139°
- AT or ABV 800ft turn RIGHT, intercept 160° to MUNAR
- Turn RIGHT track 210° to TANUD
- **Cross** TANUD AT or ABV 9000ft
- Turn RIGHT track DCT to MIBEK
- Turn RIGHT track 321° to CLIFT, then as cleared

### RWY 32

- GRAD 3.7% to 800ft, then 3.3%
- Track 319°
- AT or ABV 800ft turn LEFT, intercept 300° to CLIFT, then as cleared