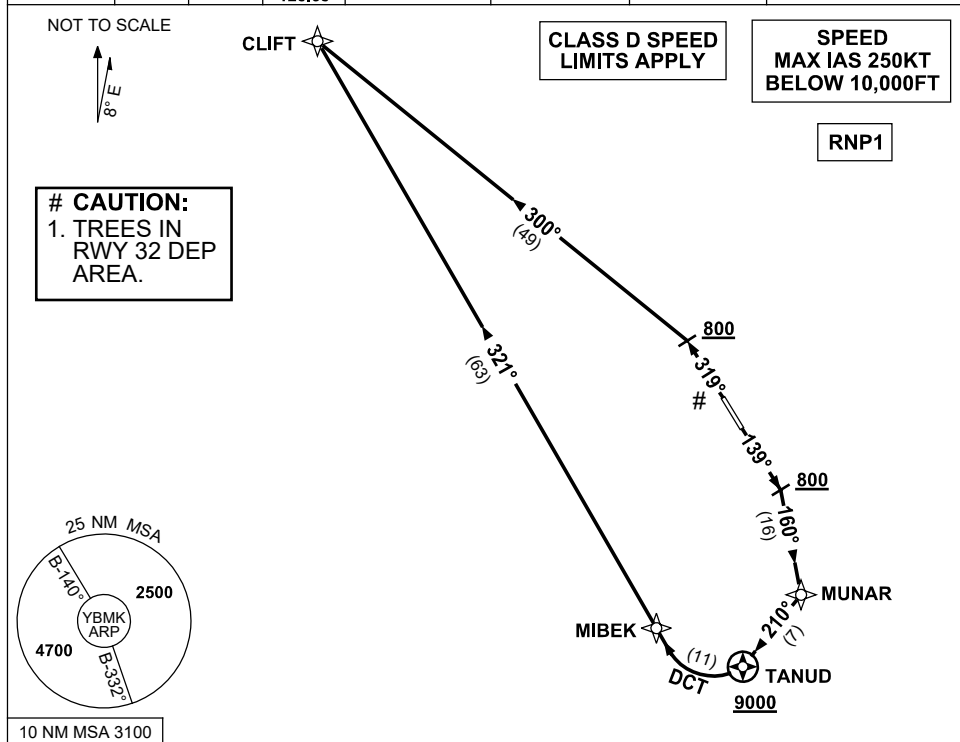


STANDARD INSTRUMENT DEPARTURES (SID)  
CLIFT THREE DEPARTURE (RNAV)  
MACKAY, QLD (YBMK)

30 NOV 2023

ATIS 112.7 128.0	SMC 121.7	TWR 124.5	CORAL APP (MK) 125.65	CTAF+AFRU (AH) 124.5	AFRU+PAL (AH) 124.5	FIA (AH) BN CEN 135.5	Bearings are Magnetic Elevations in FEET AMSL
---------------------	--------------	--------------	-----------------------------	-------------------------	------------------------	--------------------------	--



### CLIFT THREE DEPARTURE

#### RWY 14

- GRAD 3.3% (5.6% to 9000ft)
- Track 139°
- AT or ABV 800ft turn RIGHT, intercept 160° to MUNAR
- Turn RIGHT, track 210° to TANUD
- **Cross** TANUD AT or ABV 9000ft
- Turn RIGHT, track DCT to MIBEK
- Turn RIGHT, track 321° to CLIFT, thence as cleared

#### RWY 32

- GRAD 3.7% to 800ft, thence 3.3%
- Track 319°
- AT or ABV 800ft turn LEFT, intercept 300° to CLIFT, thence as cleared