

STANDARD INSTRUMENT DEPARTURES (SID)
MACKAY TWO DEPARTURE (RADAR)
MACKAY, QLD (YBMK)

19 MAR 2026

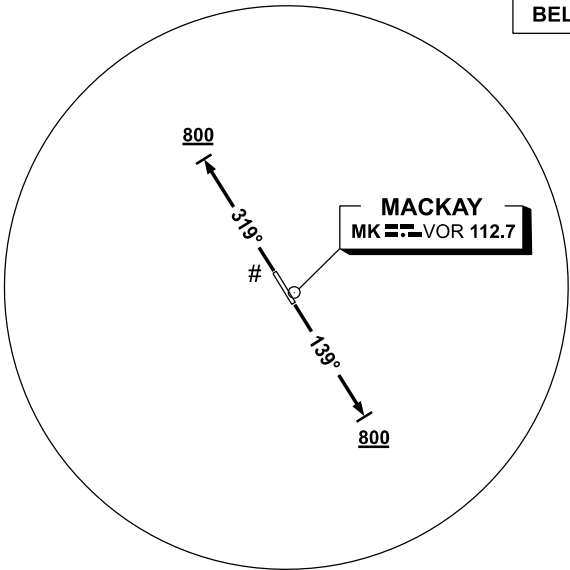
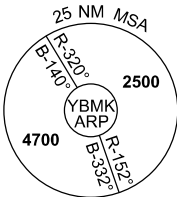
| | | | | | | | | |
|---------------------|----------------|--------------|--------------|-----------------------------|-------------------------|------------------------|--------------------------|--|
| ATIS 112.7 128.0 | AWIS 133.05 | SMC 121.7 | TWR 124.5 | CORAL APP (MK) 125.65 | CTAF+AFRU (AH) 124.5 | AFRU+PAL (AH) 124.5 | FIA (AH) BN CEN 135.5 | Bearings are Magnetic Elevations in FEET AMSL |
|---------------------|----------------|--------------|--------------|-----------------------------|-------------------------|------------------------|--------------------------|--|

NOT TO SCALE



SPEED
MAX IAS 250KT
BELOW 10,000ft

CAUTION:
1. TREES IN
RWY 32 DEP
AREA.



10 NM MSA 3100

MACKAY TWO DEPARTURE (RADAR)

RWY 14

- GRAD 3.3%
- Track 139°
- AT or ABV 800ft turn to assigned heading or track

RWY 32

- GRAD 3.7% to 800ft, then 3.3%
- Track 319°
- AT or ABV 800ft turn to assigned heading or track

COMMUNICATIONS FAILURE PROCEDURE

On recognition of communications failure

- Squawk 7600
- Maintain last assigned vector for two minutes, and
- CLIMB IF NECESSARY TO MINIMUM SAFE ALTITUDE, to maintain terrain clearance, then
- proceed in accordance with the latest ATC route clearance acknowledged.

Changes: AWIS FREQUENCY.

BMKDP01-186