

**STANDARD INSTRUMENT DEPARTURES (SID)  
MACKAY TWO DEPARTURE (RADAR)  
MACKAY, QLD (YBMK)**

**1 DEC 2022**

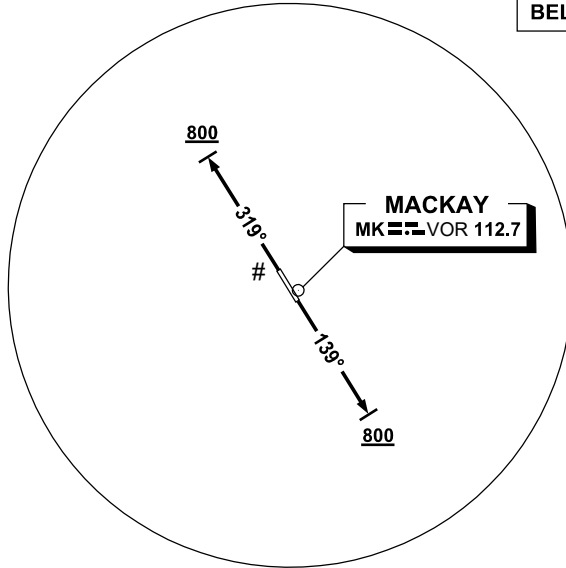
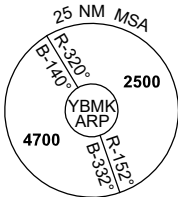
ATIS 112.7 128.0	SMC 121.7	TWR 124.5	CORAL APP (MK) 125.65	CTAF+AFRU (AH) 124.5	AFRU+PAL (AH) 124.5	FIA (AH) BN CEN 135.5	Bearings are Magnetic Elevations in FEET AMSL
---------------------	--------------	--------------	-----------------------------	-------------------------	------------------------	--------------------------	--

NOT TO SCALE



**SPEED  
MAX IAS 250KT  
BELOW 10,000FT**

**# CAUTION:**  
1. TREES IN  
RWY 32 DEP  
AREA.



10 NM MSA 3100

**MACKAY TWO DEPARTURE (RADAR)**

**RWY 14**

- GRAD 3.3%
- Track 139°
- AT or ABV 800ft turn to assigned heading or track

**RWY 32**

- GRAD 3.7% to 800ft, then 3.3%
- Track 319°
- AT or ABV 800ft turn to assigned heading or track

**COMMUNICATIONS FAILURE PROCEDURE**

On recognition of communications failure

- Squawk 7600
- Maintain last assigned vector for two minutes, and
- CLIMB IF NECESSARY TO MINIMUM SAFE ALTITUDE, to maintain terrain clearance, then
- proceed in accordance with the latest ATC route clearance acknowledged.

Changes: CORAL APP FREQUENCY, Editorial.

BMKDP01-173