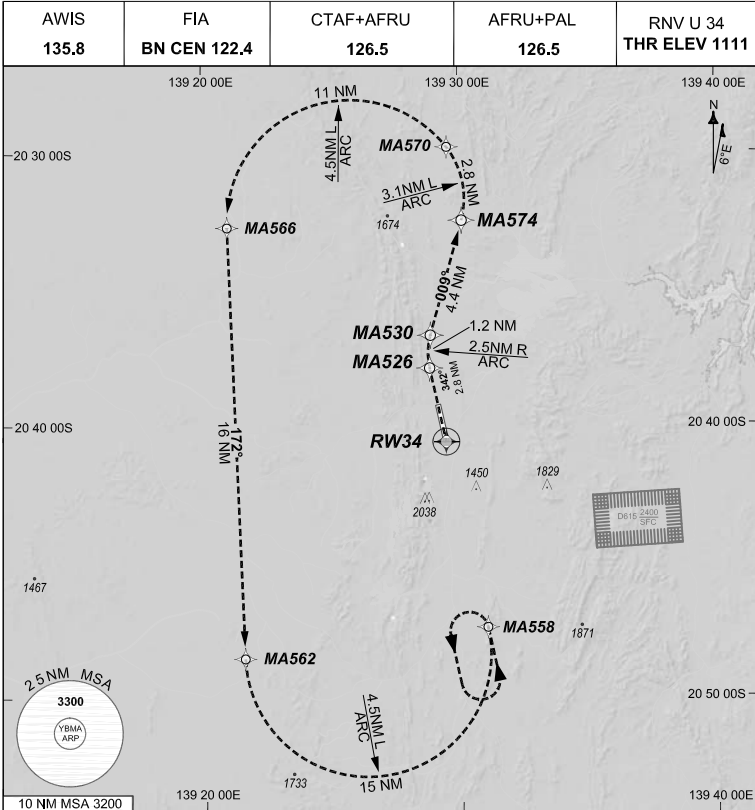


FOR CASA APPROVED  
OPERATORS ONLY  
USE QNH

1 DEC 2022

GE PROPRIETARY INFORMATION



**RNP AR APCH**

- RF RQ
- YBMA ACT QNH RQ
- YBMA ACT TEMP RQ
- PROC TEMP RANGE -2°C TO +45°C

**Holding at MA558**

TR IN	TURN	TIME	MIN ALT	DME LMT
341°	Left	1'	3300	

**AD ELEV 1121**

Bearings are Magnetic  
Elevations in FEET AMSL

**ENGINE OUT MISSED APPROACH:**

Track via the RNP AR Engine Out Missed Approach track to MA558 and hold as published. Acceleration altitude 2200FT QNH (1000FT AGL). Maximum holding speed 230 KIAS. EO hold only.

202208050931 COPYRIGHT 2022 NAVERUS, INC. USA

Changes: NEW

BMAGN06-173

**DO NOT USE FOR NAVIGATION**

Prepared by GE Aviation

