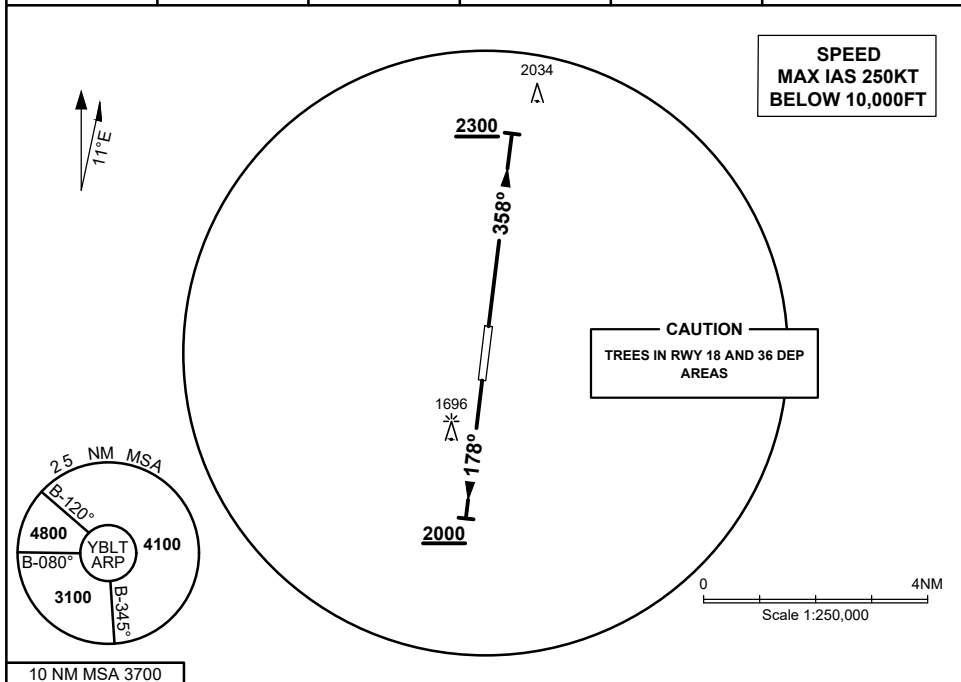


04 SEP 2025

AWIS 134.05	FIA ML CEN 126.8	CTAF + AFRU 127.75	AFRU + PAL 127.75		Bearings are Magnetic Elevations in FEET AMSL
----------------	---------------------	-----------------------	----------------------	--	--



BALLARAT ONE DEPARTURE

RWY 18

- GRAD 3.6% to 2000FT, thence 3.3%
- Track 178°
- AT or ABV 2000FT turn as required
- Continue climb to 4800FT
- Intercept flight plan route

RWY 36

- GRAD 4.1% to 2300FT, thence 3.3%
- Track 358°
- AT or ABV 2300FT turn as required
- Continue climb to 4800FT
- Intercept flight plan route