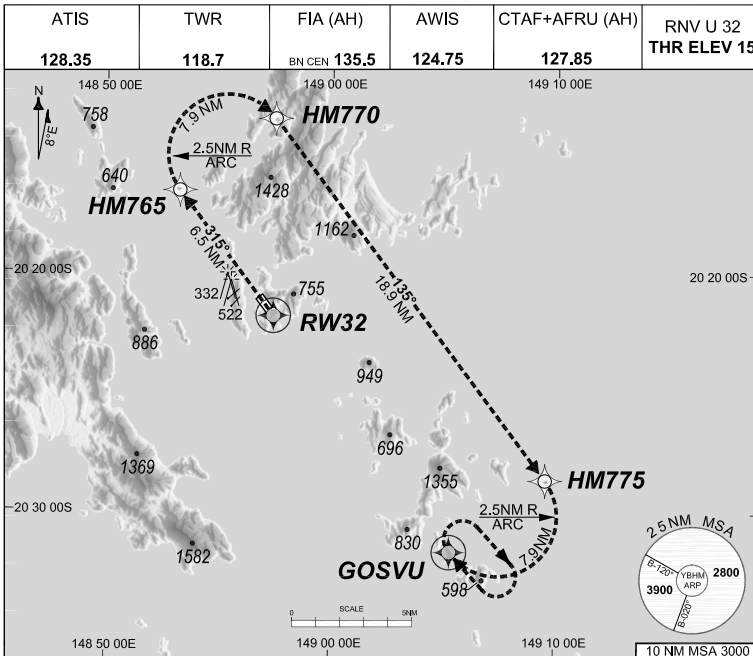


24 MAR 2022

USE QNH

HAMILTON ISLAND, QLD (YBHM)

GE PROPRIETARY INFORMATION



RNP AR APCH
- RF RQ
- YBHM ACT QNH RQ
- YBHM ACT TEMP RQ
- PROC TEMP RANGE
+14°C TO +36°C

Holding at GOSVU

| TR IN TURN | TIME | MIN ALT | DME LMT |
|------------|------|---------|---------|
| 315° Right | 1' | 4000 | |

AD ELEV 15

Bearings are Magnetic
Elevations in FEET AMSL

ENGINE OUT MISSED APPROACH:

Track via the RNP AR Engine Out Missed Approach track to GOSVU and hold as published.

Acceleration altitude see Go-Around Safety Assessment.
Continue to climb in hold as necessary to 4000FT, or as directed by ATC. EO hold only, not contained in CTA. Maximum holding speed **230 KIAS**.

202109231255 COPYRIGHT 2021 NAVERUS, INC. USA

Revision: From SUP H97/21, chart title

DO NOT USE FOR NAVIGATION

Prepared by GE Aviation

BHMG08-170

