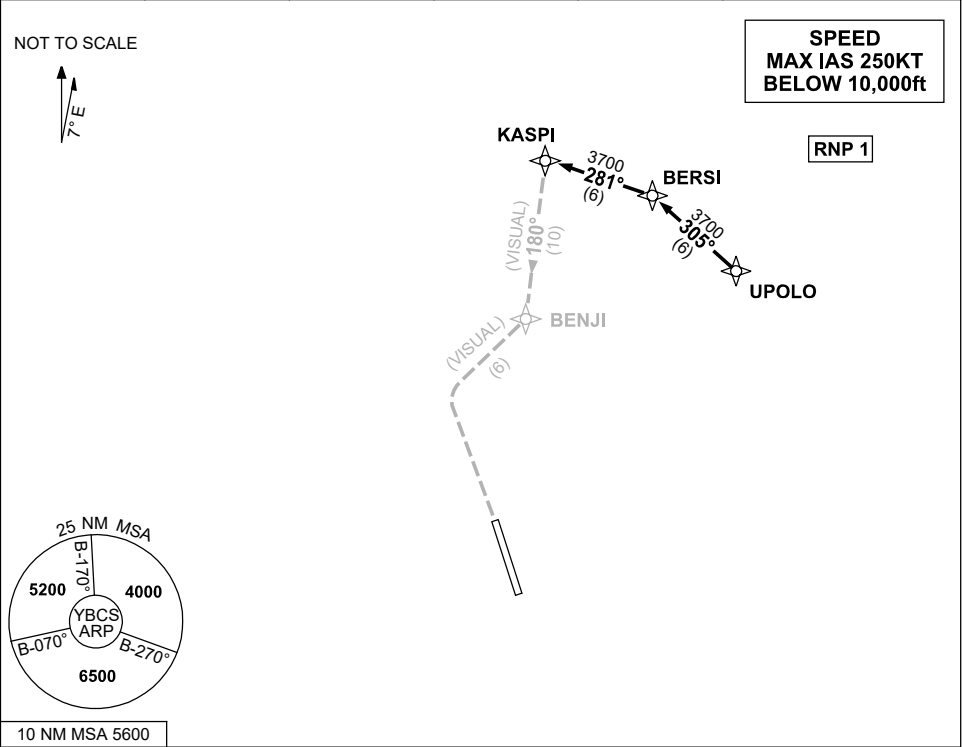


STANDARD INSTRUMENT ARRIVAL (STAR)  
UPOLO TWO VICTOR ARRIVAL (RNAV)  
CAIRNS/CAIRNS INTL, QLD (YBCS)

04 SEP 2025

ATIS 113.0 131.1	APP 118.4 126.1	TWR 124.9	SMC 121.7		Bearings are Magnetic Elevations in FEET AMSL
---------------------	--------------------	--------------	--------------	--	--



**ARRIVAL:**

**UPOLO TWO**

- From UPOLO, track 305° to BERSI
- Turn LEFT, track 281° to KASPI

**RWY 15 VICTOR:**

- From KASPI, track 180° VISUAL to BENJI then track via "Creek Corridor" (Cairns NAP refers)

**COMMUNICATIONS FAILURE: PROCEDURE IN IMC  
IF ABLE CTC CS ATC ON TEL: (07) 3866 3533**

- Squawk 7600, comply with vertical navigation requirements, but not below MSA.
- Track via the latest STAR clearance to the nominated runway, then fly the most suitable approach in accordance with ERSA EMERG Section 1.5.

Changes: FROM SUP H46/25.

BCSSR19-184