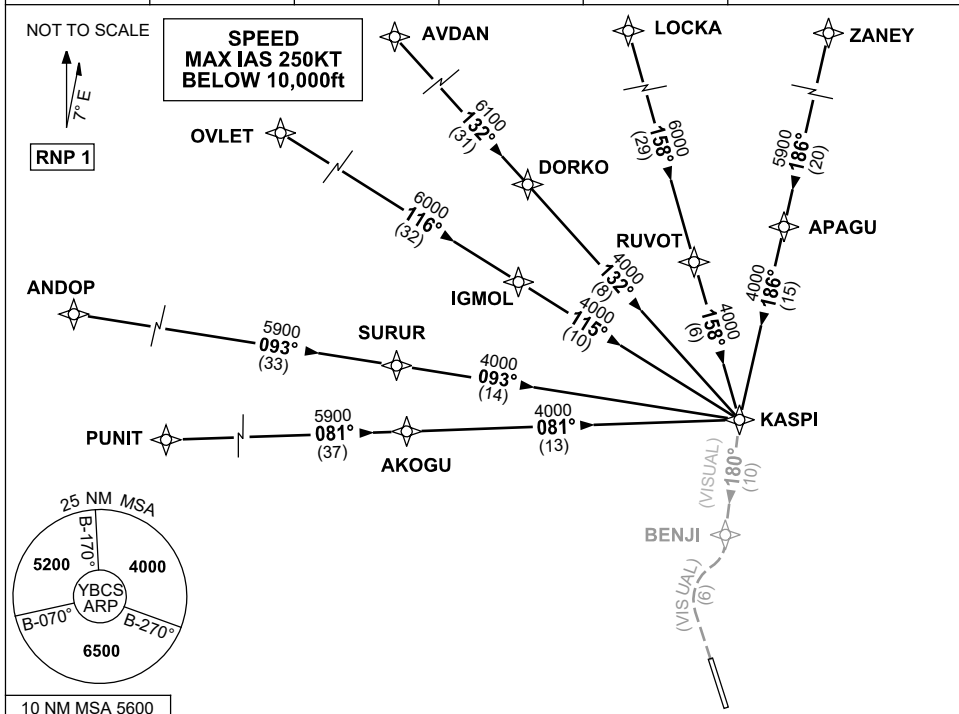


**STANDARD INSTRUMENT ARRIVAL (STAR)  
KASPI ONE VICTOR ARRIVAL (RNAV)  
CAIRNS/CAIRNS INTL, QLD (YBCS)**

20 MAR 2025

ATIS 113.0 131.1	APP 118.4 126.1	TWR 124.9	SMC 121.7		Bearings are Magnetic Elevations in FEET AMSL
---------------------	--------------------	--------------	--------------	--	--



**TRANSITIONS:**

- PUNIT:** • From PUNIT, track 081° to AKOGU, then track 081° to KASPI
- ANDOP:** • From ANDOP, track 093° to SURUR, then track 093° to KASPI
- OVLET:** • From OVLET, track 116° to IGMOL, then track 115° to KASPI
- AVDAN:** • From AVDAN, track 132° to DORKO, then track 132° to KASPI
- LOCKA:** • From LOCKA, track 158° to RUVOT, then track 158° to KASPI
- ZANEY:** • From ZANEY, track 186° to APAGU, then track 186° to KASPI

**FOLLOW ARRIVAL INSTRUCTIONS**

**ARRIVAL:**

**KASPI ONE**

- RWY 15 VICTOR:** • From KASPI, track 180° VISUAL to BENJI then VISUAL track via 'Creek Corridor' (Cairns NAP refers)

**COMMUNICATIONS FAILURE: PROCEDURE IN IMC**

**IF ABLE CTC CS ATC ON TEL: (07) 3866 3533**

- Squawk 7600, comply with vertical navigation requirements, but not below MSA.
- Track via the latest STAR clearance to the nominated runway, then fly the most suitable approach in accordance with ERSA EMERG Section 1.5.