

STANDARD INSTRUMENT ARRIVAL (STAR) UPOLO TWO ALPHA, BRAVO, ZULU ARRIVALS (RNAV) CAIRNS/CAIRNS INTL, QLD (YBCS)

04 SEP 2025

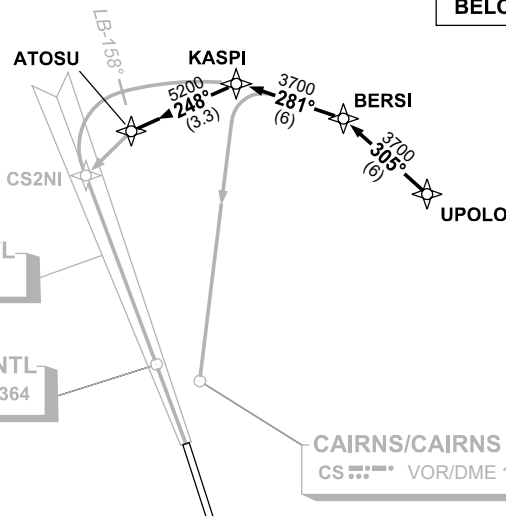
ATIS 113.0 131.1	APP 118.4 126.1	TWR 124.9	SMC 121.7		Bearings are Magnetic Elevations in FEET AMSL
---------------------	--------------------	--------------	--------------	--	--

NOT TO SCALE



SPEED
MAX IAS 250KT
BELOW 10,000ft

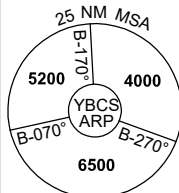
RNP 1



CAIRNS/CAIRNS INTL
ICS 109.9 ILS 109.9

CAIRNS/CAIRNS INTL
CS 364 NDB 364

CAIRNS/CAIRNS INTL
CS 113.0 VOR/DME 113.0



10 NM MSA 5600

ARRIVAL:

UPOLO TWO

- From UPOLO, track 305° to BERSI,
- Turn LEFT, track 281° to KASPI.

RWY 15 ALPHA: • From KASPI, track via ILS or LOC RWY 15

RWY 15 BRAVO: • From KASPI, track via NDB-A or VOR-A

RWY 15 ZULU: • From KASPI, track 248° to ATOSU for RNP Y RWY 15 (LNAV/VNAV ONLY) or RNP Z RWY 15

COMMUNICATIONS FAILURE: PROCEDURE IN IMC IF ABLE CTC CS ATC ON TEL: (07) 3866 3533

- Squawk 7600, comply with vertical navigation requirements, but not below MSA.
- Track via the latest STAR clearance to the nominated runway, then fly the most suitable approach in accordance with ERSA EMERG Section 1.5.

Changes: FROM SUP H46/25.

BCSSR08-184