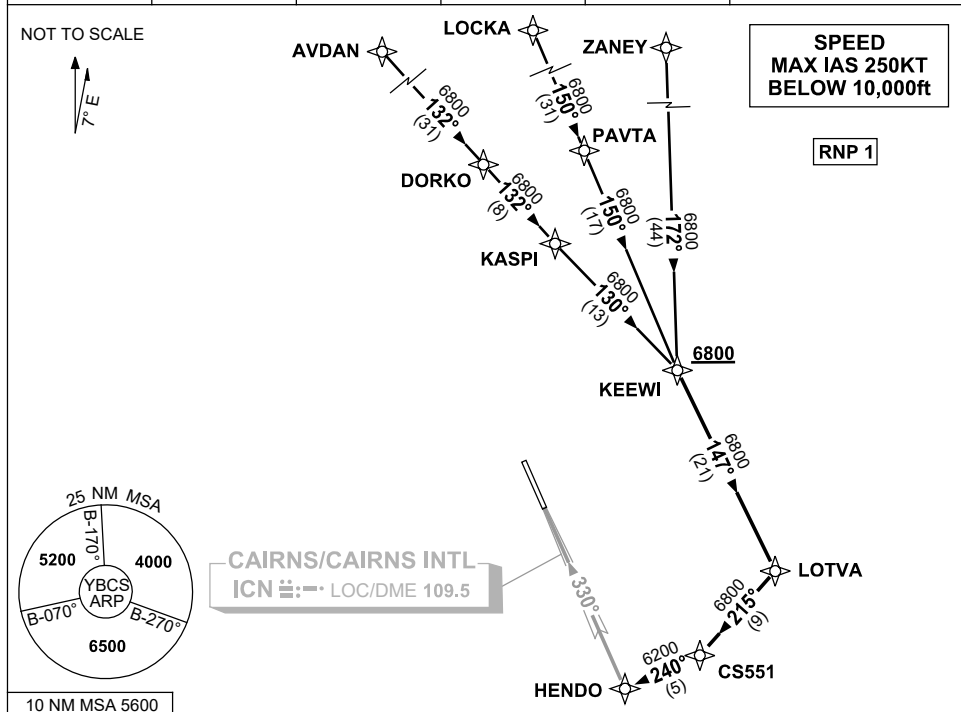


**STANDARD INSTRUMENT ARRIVAL (STAR)  
KEEWI FOUR ALPHA ARRIVAL (RNAV)  
CAIRNS/CAIRNS INTL, QLD (YBCS)**

20 MAR 2025

ATIS 113.0 131.1	APP 118.4 126.1	TWR 124.9	SMC 121.7		Bearings are Magnetic Elevations in FEET AMSL
---------------------	--------------------	--------------	--------------	--	--



**TRANSITIONS:**

- ZANEY:** • From ZANEY, track 172° to KEEWI
- LOCKA:** • From LOCKA, track 150° to PAVTA  
• Track 150° to KEEWI
- AVDAN:** • From AVDAN, track 132° to DORKO  
• Track 132° to KASPI  
• Track 130° to KEEWI

**FOLLOW ARRIVAL INSTRUCTIONS**

**ARRIVAL: KEEWI FOUR**

- RWY 33 ALPHA:** **Cross** KEEWI AT or ABV 6800ft
- From KEEWI, track 147° to LOTVA
  - Turn RIGHT, track 215° to CS551
  - Turn RIGHT, track 240° to HENDO for LOC RWY 33

**COMMUNICATIONS FAILURE: PROCEDURE IN IMC**

**IF ABLE CTC CS ATC ON TEL: (07) 3866 3533**

- Squawk 7600, comply with vertical navigation requirements, but not below MSA.
- Track via the latest STAR clearance to the nominated runway, then fly the most suitable approach in accordance with ERSA EMERG Section 1.5.

Changes: REVISED PROC, MSA, VALIDITY INDICATOR, Editorial.

BCSSR07-182