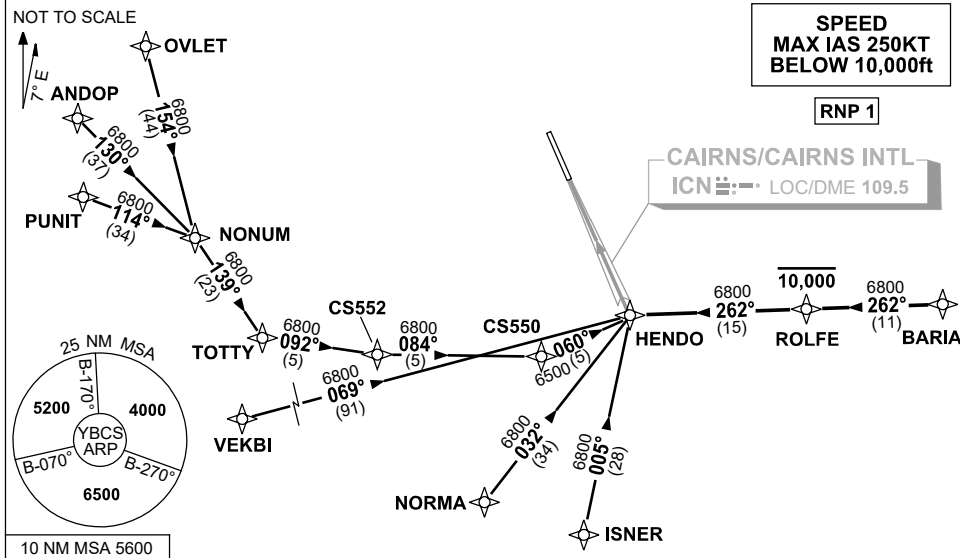


# STANDARD INSTRUMENT ARRIVAL (STAR) HENDO TWO ALPHA YANKEE ARRIVALS (RNAV) CAIRNS/CAIRNS INTL, QLD (YBCS)

04 SEP 2025

ATIS 113.0 131.1	APP 118.4 126.1	TWR 124.9	SMC 121.7		Bearings are Magnetic Elevations in FEET AMSL
---------------------	--------------------	--------------	--------------	--	--



## TRANSITIONS:

### OVLET: From OVLET to HENDO

- Track 154° to NONUM
- Turn LEFT, track 139° to TOTTY
- Turn LEFT, track 092° to CS552
- Turn LEFT, track 084° to CS550
- Turn LEFT, track 060° to HENDO

### ANDOP: From ANDOP to HENDO

- Track 130° to NONUM
- Turn RIGHT, track 139° to TOTTY
- Turn LEFT, track 092° to CS552
- Turn LEFT, track 084° to CS550
- Turn LEFT, track 060° to HENDO

### VEKBI: From VEKBI to HENDO

- Track 069° to HENDO

### PUNIT: From PUNIT to HENDO

- Track 114° to NONUM
- Turn RIGHT, track 139° to TOTTY
- Turn LEFT, track 092° to CS552
- Turn LEFT, track 084° to CS550
- Turn LEFT, track 060° to HENDO

### NORMA: From NORMA to HENDO

- Track 032° to HENDO

### ISNER: From ISNER to HENDO

- Track 005° to HENDO

### BARIA: From BARIA to HENDO

- Track 262° to ROLFE
- **Cross** ROLFE AT or BLW 10,000ft
- Track 262° to HENDO

## FOLLOW ARRIVAL INSTRUCTIONS

### ARRIVAL: HENDO TWO

**RWY 33 ALPHA:** From HENDO track via LOC RWY 33 approach

**RWY 33 YANKEE:** From HENDO track via RNP Y RWY 33 (AR) approach

## COMMUNICATIONS FAILURE: PROCEDURE IN IMC

**IF ABLE CTC CS ATC ON TEL: (07) 3866 3533**

- Squawk 7600, comply with vertical navigation requirements, but not below MSA.
- Track via the latest STAR clearance to the nominated runway, then fly the most suitable approach in accordance with ERSA EMERG Section 1.5.

Changes: FROM SUP H46/25.

BCSSR05-184