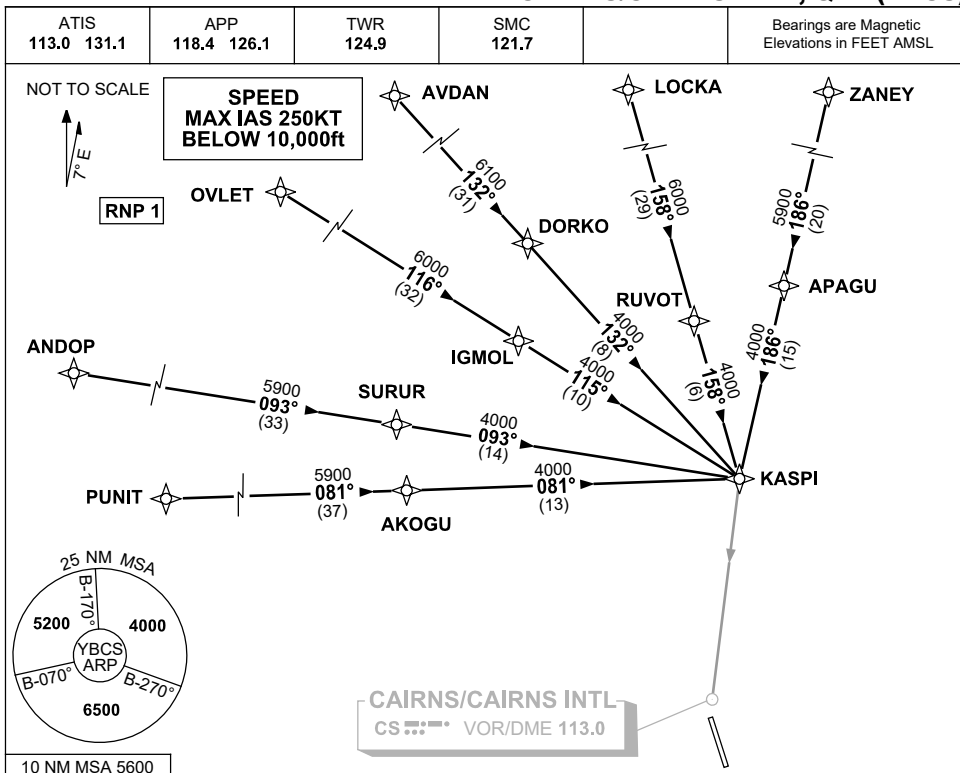


# STANDARD INSTRUMENT ARRIVAL (STAR) KASPI ONE BRAVO ARRIVAL (RNAV) CAIRNS/CAIRNS INTL, QLD (YBCS)

20 MAR 2025



## TRANSITIONS:

- PUNIT:** • From PUNIT, track 081° to AKOGU, then track 081° to KASPI
- ANDOP:** • From ANDOP, track 093° to SURUR, then track 093° to KASPI
- OVLET:** • From OVLET, track 116° to IGMOL, then track 115° to KASPI
- AVDAN:** • From AVDAN, track 132° to DORKO, then track 132° to KASPI
- LOCKA:** • From LOCKA, track 158° to RUVOT, then track 158° to KASPI
- ZANEY:** • From ZANEY, track 186° to APAGU, then track 186° to KASPI

## FOLLOW ARRIVAL INSTRUCTIONS

## ARRIVAL:

**KASPI ONE**

**RWY 15 BRAVO:** • From KASPI, track via NDB-A or VOR-A.

## COMMUNICATIONS FAILURE: PROCEDURE IN IMC IF ABLE CTC CS ATC ON TEL: (07) 3866 3533

- Squawk 7600, comply with vertical navigation requirements, but not below MSA.
- Track via the latest STAR clearance to the nominated runway, then fly the most suitable approach in accordance with ERSA EMERG Section 1.5.