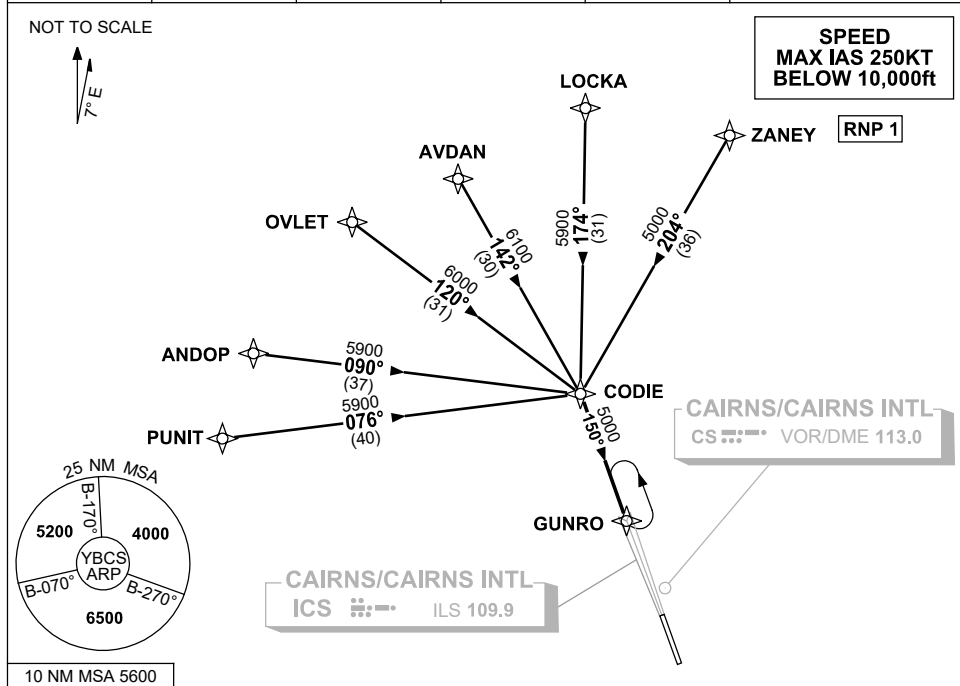


**STANDARD INSTRUMENT ARRIVAL (STAR)
CODIE ONE ALPHA X-RAY ZULU ARRIVALS (RNAV)
CAIRNS/CAIRNS INTL, QLD (YBCS)**

04 SEP 2025

ATIS 113.0 131.1	APP 118.4 126.1	TWR 124.9	SMC 121.7	Bearings are Magnetic Elevations in FEET AMSL
---------------------	--------------------	--------------	--------------	--



TRANSITIONS:

- ZANEY:** From ZANEY track 204° to CODIE
- LOCKA:** From LOCKA track 174° to CODIE
- AVDAN:** From AVDAN track 142° to CODIE
- OVLET:** From OVLET track 120° to CODIE
- ANDOP:** From ANDOP track 090° to CODIE
- PUNIT:** From PUNIT track 076° to CODIE

FOLLOW ARRIVAL INSTRUCTIONS

ARRIVAL:

CODIE ONE

- RWY 15 ALPHA:** • From CODIE track 150° to GUNRO then via ILS RWY 15 or LOC RWY 15
- RWY 15 X-RAY:** • From CODIE track 150° to GUNRO then via RNP X RWY 15 (AR)
- RWY 15 ZULU:** • From CODIE track 150° to GUNRO then via RNP Y RWY 15 (LNAV/VNAV ONLY) or RNP Z RWY 15

**COMMUNICATIONS FAILURE: PROCEDURE IN IMC
IF ABLE CTC CS ATC ON TEL: (07) 3866 3533**

- Squawk 7600, comply with vertical navigation requirements, but not below MSA.
- Track via the latest STAR clearance to the nominated runway, then fly the most suitable approach in accordance with ERS A EMERG Section 1.5.

Changes: FROM SUP H46/25.

BCSSR01-184