

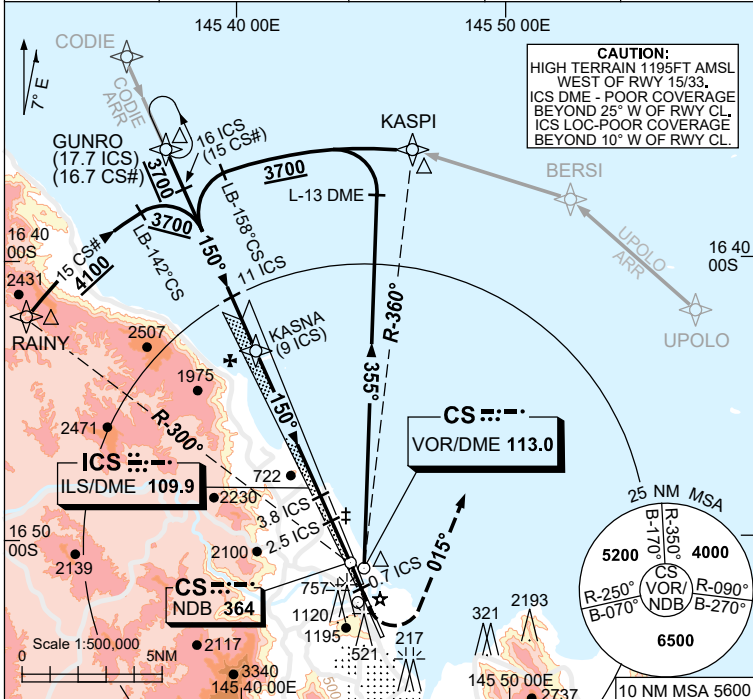
USE QNH

ILS-Z or LOC-Z RWY 15

5 SEP 2024

CAIRNS/CAIRNS INTL, QLD (YBCS)

ATIS 113.0 131.1	APP 118.4 (AS ADVISED)	TWR 124.9	SMC 121.7	NAVAID RQ: • DME or GNSS (ILS) • DME (LOC ONLY)
---------------------	------------------------------	--------------	--------------	---

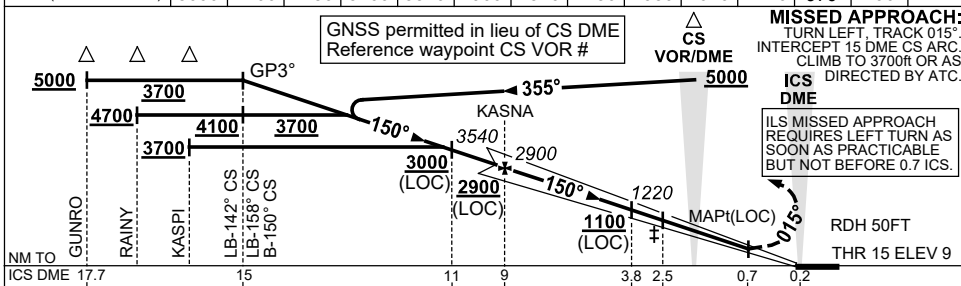


**Holding at GUNRO**

TR IN	TURN	TIME	MIN ALT	DME LMT
150°	Left	1	5000	

**AD ELEV 10**  
Bearings are Magnetic  
Elevations in FEET AMSL

NM TO ICS DME	15.6	14.6	13	11.5	11	9	8	7	6	5	3.8	3	2.5
ALT (3° APCH PATH)	5000	4700	4180	3700	3540	2900	2570	2250	1930	1610	1220	970	790



NM TO ICS DME	17.7	15	11	9	3.8	2.5	0.7	0.2
NM TO THR 15	17.5	15.9	10.9	8.8	3.6	2.3	0.5	0

CATEGORY	A	B	C	D
S-I ILS (4.0% MAP)	NOT APPLICABLE		400 (391) 1.3	
S-I ILS (2.5% MAP)			470 (461) 1.7	
S-I LOC			790 (781-3.6)	
CIRCLING *			790 (780-4.0) 1230 (1220-5.0)	
ALTERNATE			(1280-6.0)	(1720-7.0)

- NOTES**
- \*1. NO CIRCLING WEST OF RWY 15/33 OR BEYOND 4.4 CS DME TO THE SOUTH.
  - \*2. MAX IAS 180KT FM 1000FT ON FNA TIL TR 015° IN MISSED APCH.
  3. ACFT MAY BE RADAR VECTORED TO 14 ICS DME FINAL AT 3700FT.
  4. COLOUR: SEE SPEC NOTICES.

Changes: MM REMOVED, Editorial.

BCSI104-180