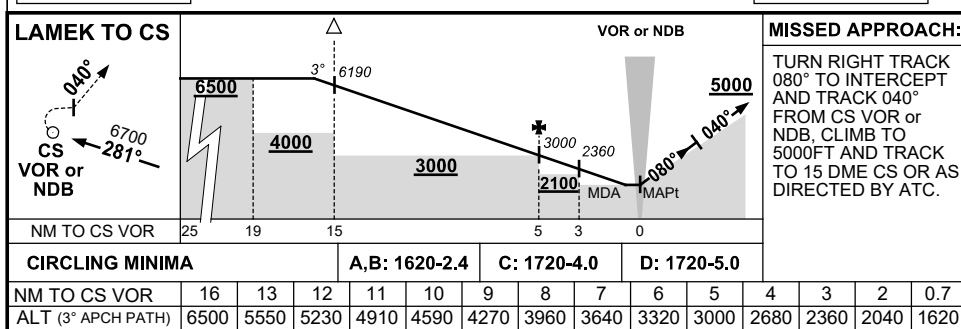
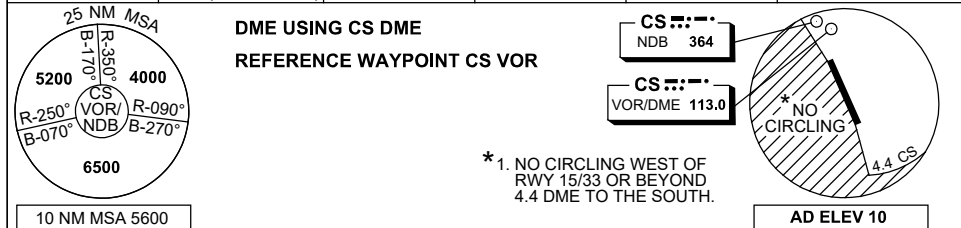


DME or GNSS ARRIVAL PROCEDURES CAIRNS/CAIRNS INTL, QLD (YBCS) Page 2

2 DEC 2021

ATIS 113.0 131.1	APP 118.4 126.1 (AS ADVISED)	TWR 124.9	SMC 121.7		Bearings are Magnetic Elevations in FEET AMSL
---------------------	------------------------------------	--------------	--------------	--	--



LIMITATION : 185KT IAS MAX UNTIL ESTABLISHED ON R-040° CS VOR OR NDB.

CAUTION : DO NOT DELAY TURN ONTO 080° DUE TO HIGH TERRAIN WEST OF MISSED APPROACH AREA.