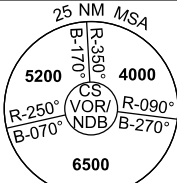


# DME or GNSS ARRIVAL PROCEDURES CAIRNS/CAIRNS INTL, QLD (YBCS) Page 1

09 JUL 2026

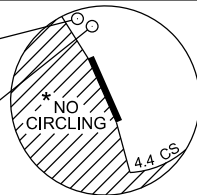
ATIS 113.0 131.1	APP 118.4 126.1 (AS ADVISED)	TWR 124.9	SMC 121.7		Bearings are Magnetic Elevations in FEET AMSL
---------------------	------------------------------------	--------------	--------------	--	--



**DME USING CS DME  
REFERENCE WAYPOINT CS VOR**

CS ---  
NDB 364

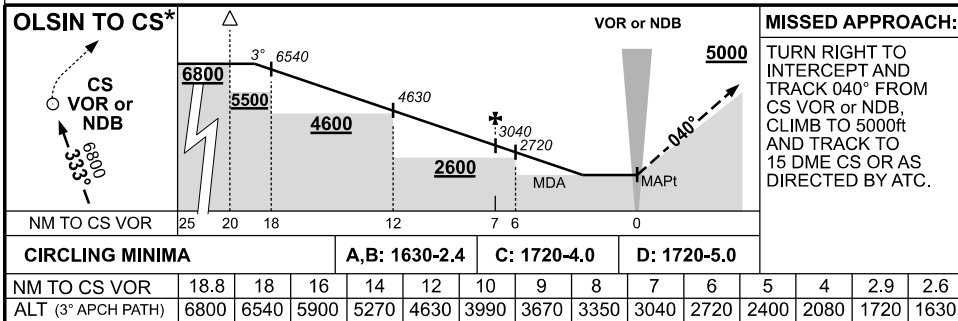
CS ---  
VOR/DME 113.0



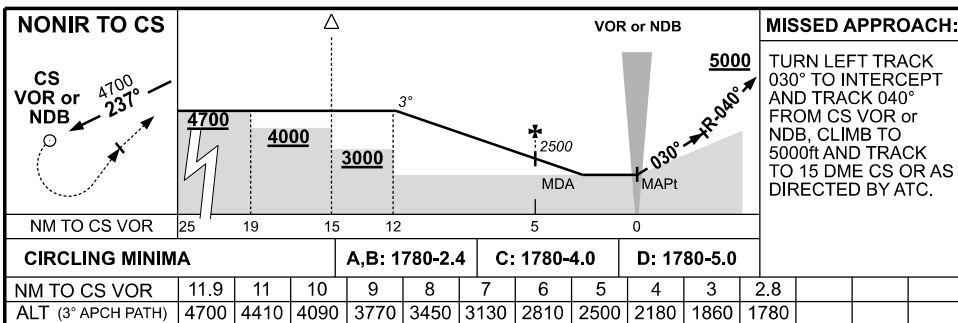
\* 1. NO CIRCLING WEST OF RWY 15 / 33 OR BEYOND 4.4 DME TO THE SOUTH.

10 NM MSA 5600

AD ELEV 10



\* **NOTE** : STRAIGHT-IN LDG RWY 33 NOT AVAILABLE UNLESS VISUAL BY 10 DME - DESC GRADIENT TO THR 345ft/NM.



**LIMITATION** : 185KT IAS MAX UNTIL ESTABLISHED ON R-040° CS VOR OR NDB.

**CAUTION** : DO NOT DELAY TURN ONTO 030° DUE TO HIGH TERRAIN WEST OF MISSED APPROACH AREA.