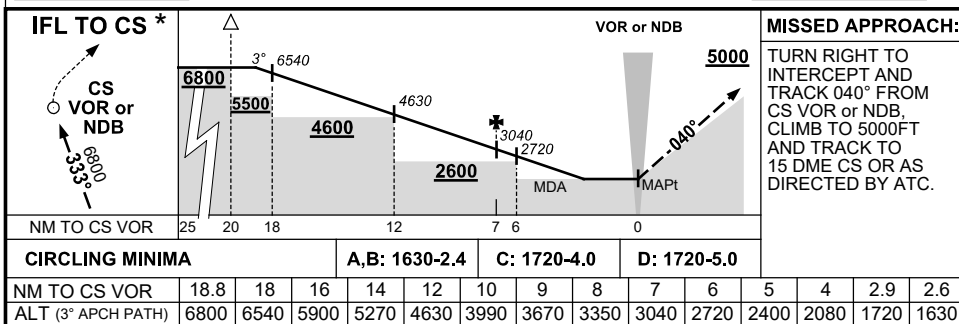
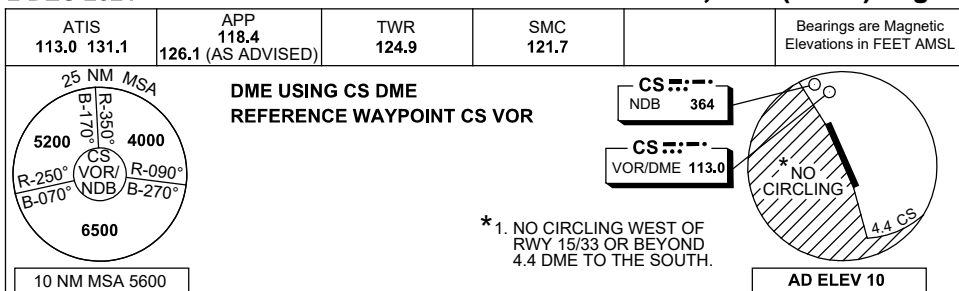
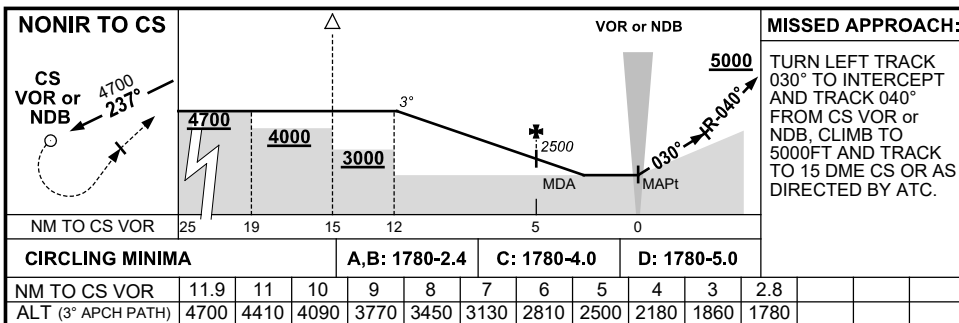


DME or GNSS ARRIVAL PROCEDURES CAIRNS/CAIRNS INTL, QLD (YBCS) Page 1

2 DEC 2021



* **NOTE :** STRAIGHT-IN LDG RWY 33 NOT AVAILABLE UNLESS VISUAL BY 10 DME - DESC GRADIENT TO THR 345FT/NM.



LIMITATION : 185KT IAS MAX UNTIL ESTABLISHED ON R-040° CS VOR OR NDB.

CAUTION : DO NOT DELAY TURN ONTO 030° DUE TO HIGH TERRAIN WEST OF MISSED APPROACH AREA.