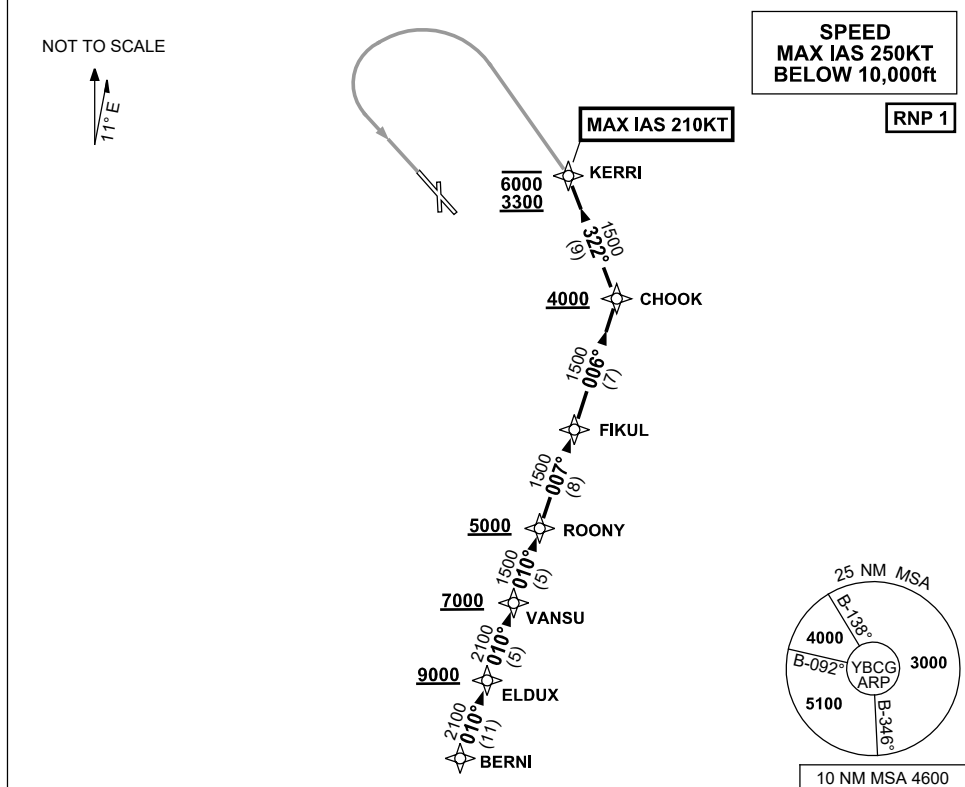


# STANDARD ARRIVAL ROUTE (STAR) BERNI THREE YANKEE ARRIVAL (RNAV) GOLD COAST, QLD (YBCG)

12 JUN 2025

ATIS 112.3 (H24) 134.5 (TWR HR)	APP BN 123.5	TWR 118.7	SMC 121.8	FIA (AH) BN CEN 119.5	AWIS (AH) 134.5	CTAF+AFRU (AH) AFRU+PAL (AH) 118.7	Bearings are Magnetic Elevations in FEET AMSL
------------------------------------	-----------------	--------------	--------------	--------------------------	--------------------	--	--



## ARRIVAL: BERNI THREE YANKEE

- From BERNI track 010° to ELDUX  
**Cross** ELDUX AT or ABV 9000ft
- Track 010° to VANSU  
**Cross** VANSU AT or ABV 7000ft
- Track 010° to ROONY  
**Cross** ROONY AT or ABV 5000ft

## RWY 14:

- From ROONY, turn LEFT track 007° to FIKUL
- Track 006° to CHOOK  
**Cross** CHOOK AT or ABV 4000ft
- Turn LEFT, track 322° to KERRI  
**Cross** KERRI BTN 3300ft and 6000ft  
MAX IAS 210KT from KERRI
- Track via RNP Y RWY 14 (AR)

## COMMUNICATIONS FAILURE PROCEDURE

### IF ABLE CTC GOLD COAST ATC ON TEL : 07 55995990

- Squawk 7600, comply with vertical navigation requirements, but not below MSA.
- Track via the latest STAR clearance to the nominated runway, then fly the most suitable approach in accordance with ERSA EMERG Section 1.5.

Changes: Editorial.

BCGSR08-183