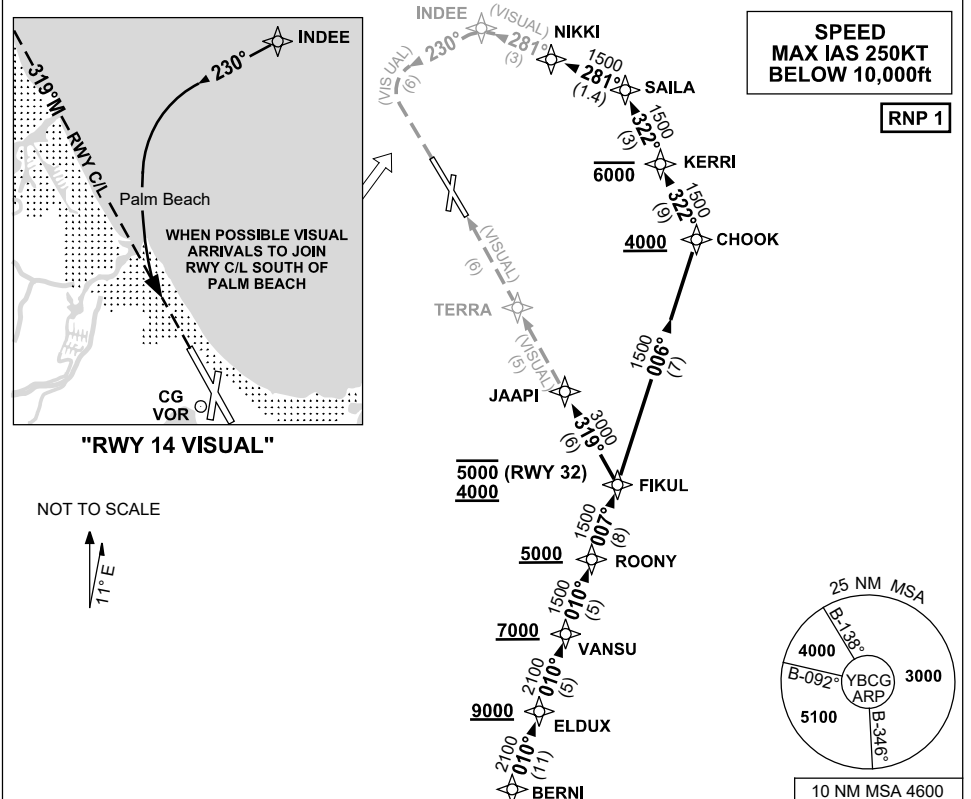


# STANDARD ARRIVAL ROUTE (STAR) BERNI THREE VICTOR ARRIVAL (RNAV) GOLD COAST, QLD (YBCG)

12 JUN 2025

ATIS 112.3 (H24) 134.5 (TWR HR)	APP BN 123.5	TWR 118.7	SMC 121.8	FIA (AH) BN CEN 119.5	AWIS (AH) 134.5	CTAF+AFRU (AH) AFRU+PAL (AH) 118.7	Bearings are Magnetic Elevations in FEET AMSL
------------------------------------	-----------------	--------------	--------------	--------------------------	--------------------	--	--



## ARRIVAL: BERNI THREE VICTOR

- From BERNI track 010° to ELDUX  
**Cross** ELDUX AT or ABV 9000ft
- Track 010° to VANSU  
**Cross** VANSU AT or ABV 7000ft
- Track 010° to ROONY  
**Cross** ROONY AT or ABV 5000ft

## RWY 32:

- From ROONY, turn LEFT track 007° to FIKUL  
**Cross** FIKUL BTN 4000ft and 5000ft
- Turn LEFT, track 319° to JAAPI
- Track VISUAL to TERRA
- Report RWY in sight for approach instructions

## RWY 14:

- From ROONY, turn LEFT track 007° to FIKUL
- Turn LEFT, track 006° to CHOOK  
**Cross** CHOOK AT or ABV 4000ft
- Turn LEFT, track 322° to KERRI  
**Cross** KERRI AT or BLW 6000ft
- Track 322° to SAILA
- Turn LEFT track 281° to NIKKI
- Track 281° VISUAL to INDEE
- Turn LEFT, track 230° to intercept 3NM final RWY 14 (RWY 14 VISUAL)

## COMMUNICATIONS FAILURE PROCEDURE

### IF ABLE CTC GOLD COAST ATC ON TEL : 07 55995990

- Squawk 7600, comply with vertical navigation requirements, but not below MSA.
- Track via the latest STAR clearance to the nominated runway, then fly the most suitable approach in accordance with ERSA EMERG Section 1.5.