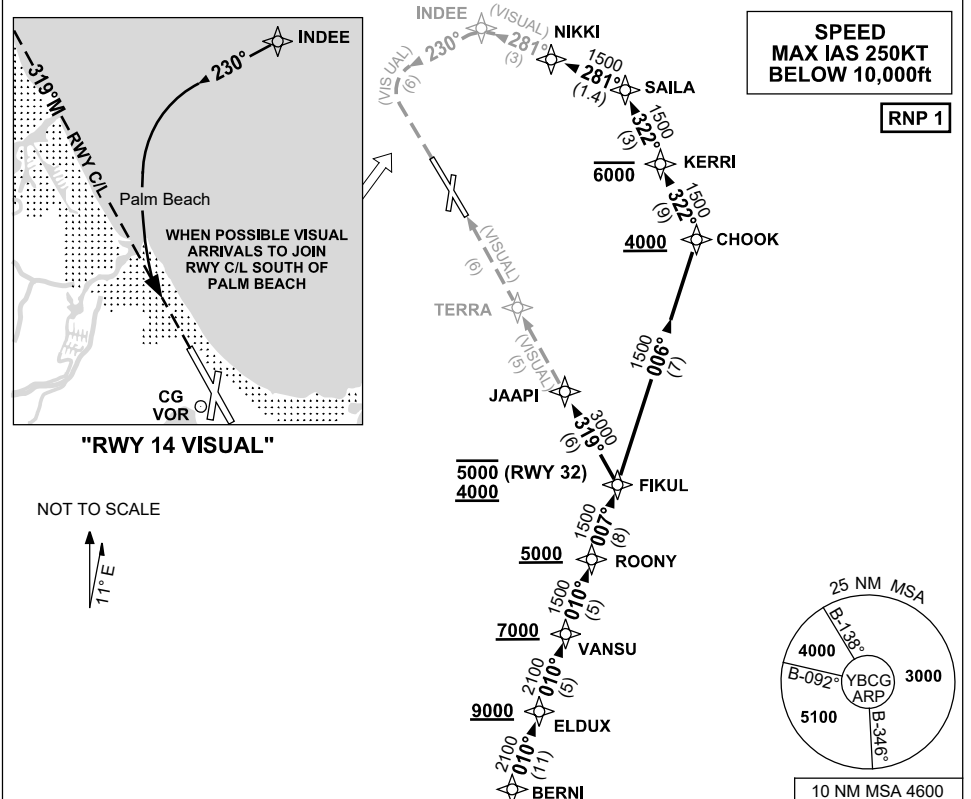


STANDARD ARRIVAL ROUTE (STAR) BERNI THREE VICTOR ARRIVAL (RNAV) GOLD COAST, QLD (YBCG)

12 JUN 2025

| | | | | | | | |
|------------------------------------|-----------------|--------------|--------------|--------------------------|--------------------|--|--|
| ATIS 112.3 (H24) 134.5 (TWR HR) | APP BN 123.5 | TWR 118.7 | SMC 121.8 | FIA (AH) BN CEN 119.5 | AWIS (AH) 134.5 | CTAF+AFRU (AH) AFRU+PAL (AH) 118.7 | Bearings are Magnetic Elevations in FEET AMSL |
|------------------------------------|-----------------|--------------|--------------|--------------------------|--------------------|--|--|



ARRIVAL: BERNI THREE VICTOR

- From BERNI track 010° to ELDUX
Cross ELDUX AT or ABV 9000ft
- Track 010° to VANSU
Cross VANSU AT or ABV 7000ft
- Track 010° to ROONY
Cross ROONY AT or ABV 5000ft

RWY 32:

- From ROONY, turn LEFT track 007° to FIKUL
Cross FIKUL BTN 4000ft and 5000ft
- Turn LEFT, track 319° to JAAPI
- Track VISUAL to TERRA
- Report RWY in sight for approach instructions

RWY 14:

- From ROONY, turn LEFT track 007° to FIKUL
- Turn LEFT, track 006° to CHOOK
Cross CHOOK AT or ABV 4000ft
- Turn LEFT, track 322° to KERRI
Cross KERRI AT or BLW 6000ft
- Track 322° to SAILA
- Turn LEFT track 281° to NIKKI,
- Track 281° VISUAL to INDEE
- Turn LEFT, track 230° to intercept 3NM final RWY 14 (RWY 14 VISUAL)

COMMUNICATIONS FAILURE PROCEDURE

IF ABLE CTC GOLD COAST ATC ON TEL : 07 55995990

- Squawk 7600, comply with vertical navigation requirements, but not below MSA.
- Track via the latest STAR clearance to the nominated runway, then fly the most suitable approach in accordance with ERSA EMERG Section 1.5.